

\$321,900 - 109, 6000 Somervale Court Sw, Calgary

MLS® #A2238621

\$321,900

2 Bedroom, 2.00 Bathroom, 835 sqft

Residential on 0.00 Acres

Somerset, Calgary, Alberta

For more information, please click the "More Information" button.

ALL UTILITIES INCLUDED IN CONDO FEES

| 2 PARKINGS INCLUDING 1 HEATED

UNDERGROUND & 1 OUTSIDE STALL | 2

MINTUES WALK to SOMERSET LRT

STATION. Beautiful large, NEWLY

RENOVATED, 2 bedrooms, 2 full bathrooms,

Non-Smoking, No Pets, MAIN FLOOR condo

located close to building entrance for easy

access, BRAND-NEW KITCHEN and

upgraded bathroom vanities with QUARTZ

COUNERTOPS, LUXURY VINYL PLANKS

flooring throughout the condo. PANTRY /

STORAGE ROOM AND IN-SUITE LAUDRY.

ALL FURNITURE INCLUDED. OPEN

CONCEPT floor plan with bedrooms on the

opposite side of the unit for added privacy,

Master bedroom with walk-in closet and

ensuite full bathroom, Guest bedroom with

adjacent full bathroom. This condo is located

in very quiet building of highly desirable Condo

Complex of Somervale Court in the quiet

community of Somerset in South Calgary Patio

overlooks green space and landscaping with

trees and is very private. Landscaped open

area in front of the building. Close to transit

(LRT & Bus), YMCA, Library, Multiplex cinema

and host of shopping within a 2 KM radius

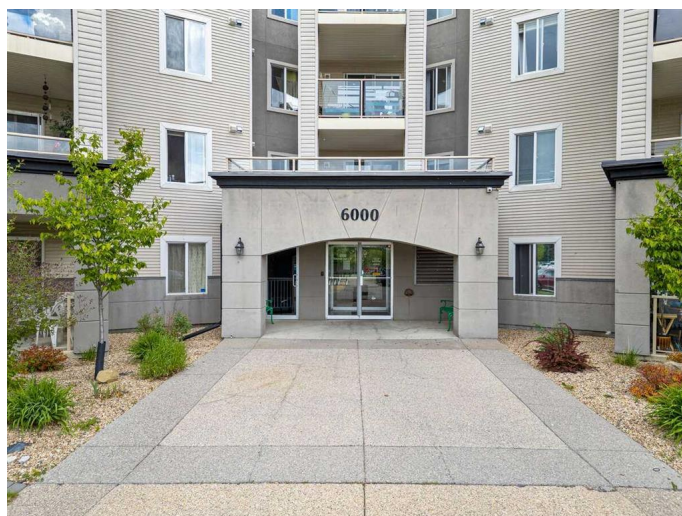
(Walmart, Superstore, Co-op, Safeway, Home

Depot, Canadian Tire, Future Shop, Staples,

Tim Hortons, Starbucks, Banks (RBC, CIBC,

TD, BMO), walk to Bishop O'Byrne Catholic

High School, South Calgary Health Center.



Everything you need is only moments away. Downtown is easily accessible via the C-train or MacLeod or Deerfoot Trails. Nearby Plaza includes medical facilities such as South Calgary Urgent Care and walk in clinic, dental clinic and much more. Immediate East of Somerset is Fish Creek Park with its extensive cycling paths and to the South is the Stoney Trail with quick access West to the mountains and Banff National Park. One of a kind!

Built in 2001

Essential Information

| | |
|----------------|-------------------|
| MLS® # | A2238621 |
| Price | \$321,900 |
| Bedrooms | 2 |
| Bathrooms | 2.00 |
| Full Baths | 2 |
| Square Footage | 835 |
| Acres | 0.00 |
| Year Built | 2001 |
| Type | Residential |
| Sub-Type | Apartment |
| Style | Single Level Unit |
| Status | Active |

Community Information

| | |
|-------------|------------------------------|
| Address | 109, 6000 Somervale Court Sw |
| Subdivision | Somerset |
| City | Calgary |
| County | Calgary |
| Province | Alberta |
| Postal Code | T2Y 4J4 |

Amenities

| | |
|----------------|---|
| Amenities | Elevator(s), Parking, Other, Snow Removal |
| Parking Spaces | 2 |
| Parking | Stall, Underground |

Interior

| | | | |
|-------------------|--|--------------------|---------------|
| Interior Features | Kitchen Island, No Animal Home, No Smoking Home, Open Floorplan, Vinyl Windows, Elevator | | |
| Appliances | Dishwasher, Electric Range, Washer/Dryer Stacked, Window Coverings | Garage Control(s), | Refrigerator, |
| Heating | Baseboard | | |
| Cooling | None | | |
| # of Stories | 4 | | |
| Basement | None | | |

Exterior

| | |
|-------------------|----------------------|
| Exterior Features | Lighting |
| Roof | Asphalt Shingle |
| Construction | Stucco, Vinyl Siding |
| Foundation | Poured Concrete |

Additional Information

| | |
|----------------|----------------|
| Date Listed | July 9th, 2025 |
| Days on Market | 63 |
| Zoning | M-C2 |

Listing Details

| | |
|----------------|------------------|
| Listing Office | Easy List Realty |
|----------------|------------------|

Data is supplied by Pillar 9â„¢ MLSÂ® System. Pillar 9â„¢ is the owner of the copyright in its MLSÂ® System. Data is deemed reliable but is not guaranteed accurate by Pillar 9â„¢. The trademarks MLSÂ®, Multiple Listing ServiceÂ® and the associated logos are owned by The Canadian Real Estate Association (CREA) and identify the quality of services provided by real estate professionals who are members of CREA. Used under license.