

\$619,000 - 39 Martha's Meadow Close Ne, Calgary

MLS® #A2229889

\$619,000

5 Bedroom, 3.00 Bathroom, 1,368 sqft
Residential on 0.08 Acres

Martindale, Calgary, Alberta

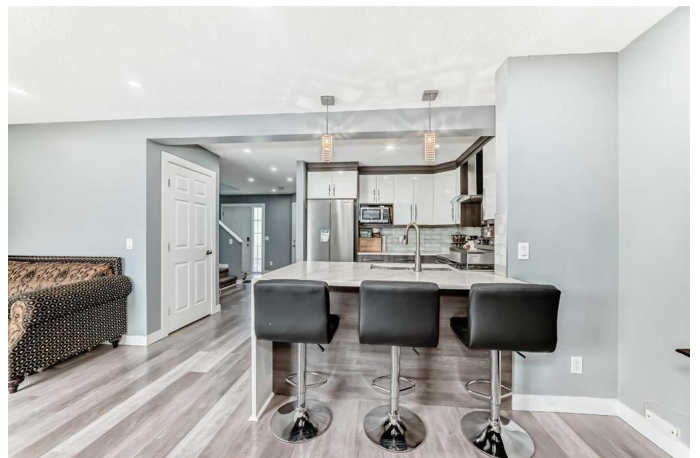
Modern Living, Prime Corner Lot, Limitless Potential â€” Your Dream Home & Smart Investment Awaits!

Discover the perfect blend of style, space, and location with this stunning corner-lot home designed for todayâ€™s modern lifestyle â€” and great potential for future land appreciation. From the moment you arrive, be impressed by striking curb appeal and the confidence of a brand-new Owens Corningâ„¢ rubber roof backed by the Platinum Protection Warranty, including comprehensive material coverage and a Lifetime Workmanship Guarantee.

This home is a rare find for car lovers, hobbyists, large families, and entertainers â€” with parking for over 10 vehicles, youâ€™ll never worry about space for guests or projects.

Step inside to a bright, open interior flooded with natural light and anchored by a spectacular artistic modern chandelier above the stairs â€” a stylish centerpiece that elevates the space. The open-concept floor plan flows seamlessly into a chef-inspired kitchen, boasting a luxurious quartz waterfall countertop that doubles as a sleek bar â€” perfect for casual meals, entertaining friends, or relaxing with a morning coffee.

Upstairs, the second floor features a modern, newer 5-piece bathroom surrounded by three



spacious bedrooms, each with large windows that fill the rooms with natural light and offer tranquil, unobstructed views.

Unlock incredible versatility with a separate entrance to a fully finished (illegal) basement suite, offering outstanding rental income potential, multi-generational living options, or a private office â€” with future legalization possible pending City approval. The large main-floor family room, currently used as an extra bedroom with its own private entrance, adapts easily to your changing needs.

Enjoy your own private backyard oasis, featuring a year-round hot tub and a customizable deck â€” ideal for flower beds, container gardens, or a peaceful outdoor retreat.

Embrace the unbeatable convenience of being minutes away from the Genesis Centre, Manmeet Singh Bhullar School, playgrounds, Martindale Off-Leash Park, and over 20 vibrant dining choices. In addition, the nearby Martindale LRT station makes commuting effortless while you enjoy your tranquil sanctuary.

Whether youâ€™re looking for a move-in-ready family home, a flexible income property, or a high-potential investment, this home delivers unmatched value and endless possibilities.

Opportunities like this donâ€™t come often. Act now â€” schedule your private tour today and secure this opportunity to claim it yours!

Built in 2003

Essential Information

MLS® #

A2229889

Price	\$619,000
Bedrooms	5
Bathrooms	3.00
Full Baths	2
Half Baths	1
Square Footage	1,368
Acres	0.08
Year Built	2003
Type	Residential
Sub-Type	Detached
Style	2 Storey
Status	Active

Community Information

Address	39 Martha's Meadow Close Ne
Subdivision	Martindale
City	Calgary
County	Calgary
Province	Alberta
Postal Code	T3J 4N7

Amenities

Parking Spaces	4
Parking	Concrete Driveway, Double Garage Attached, On Street, Outside, Covered, Driveway, Garage Door Opener, Garage Faces Front, Insulated, Off Street, See Remarks
# of Garages	2

Interior

Interior Features	Breakfast Bar, Closet Organizers, No Smoking Home, Open Floorplan, Quartz Counters, Walk-In Closet(s), Bar, Wet Bar
Appliances	Dishwasher, Dryer, Electric Cooktop, Refrigerator, Washer
Heating	Forced Air
Cooling	None
Has Basement	Yes
Basement	Exterior Entry, Finished, Full, Suite

Exterior

Exterior Features	Private Yard, Barbecue, Garden, Outdoor Grill, Private Entrance
-------------------	---

Lot Description	Back Lane, Back Yard, Corner Lot, Irregular Lot
Roof	Asphalt Shingle
Construction	Vinyl Siding, Wood Frame
Foundation	Poured Concrete

Additional Information

Date Listed	June 14th, 2025
Days on Market	71
Zoning	R-CG

Listing Details

Listing Office	RE/MAX Complete Realty
----------------	------------------------

Data is supplied by Pillar 9â„¢ MLS® System. Pillar 9â„¢ is the owner of the copyright in its MLS® System. Data is deemed reliable but is not guaranteed accurate by Pillar 9â„¢. The trademarks MLS®, Multiple Listing Service® and the associated logos are owned by The Canadian Real Estate Association (CREA) and identify the quality of services provided by real estate professionals who are members of CREA. Used under license.