

\$624,500 - 407 Whiteridge Crescent Ne, Calgary

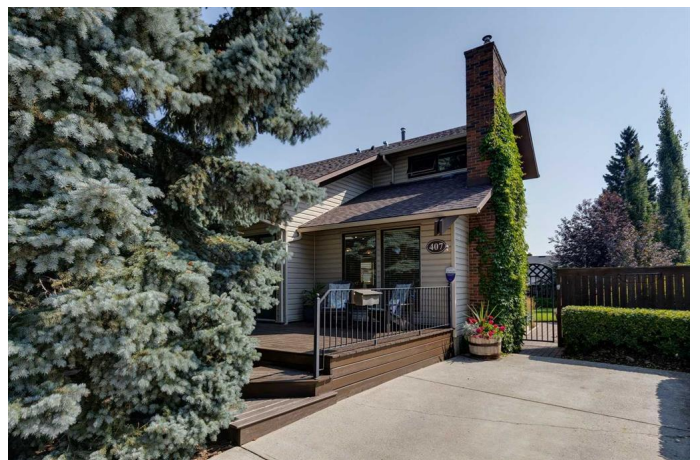
MLS® #A2219171

\$624,500

4 Bedroom, 3.00 Bathroom, 1,217 sqft
Residential on 0.12 Acres

Whitehorn, Calgary, Alberta

Welcome to this charming and meticulously cared-for 2-storey detached home in the heart of Whitehorn, Calgary. With only one owner since 1977, this gem has been lovingly updated over the years and is ready for you to call it home. Step inside to discover a bright and inviting space featuring modern updates throughout. The roof was replaced in 2010, ensuring peace of mind for years to come, while new windows installed in 2013 flood the home with natural light. The interiors boast cozy carpeted floors (updated in 2007), a sleek kitchen remodel, and a new water heater from 2020, making this home both stylish and functional. The main floor offers a welcoming living room with a gas fireplace, perfect for those chilly Calgary evenings, while the family and dining areas provide ample space for entertaining. Upstairs, the primary bedroom and additional bedroom are spacious and comfortable, promising restful nights. But the true showstopper of this home is the stunning backyard. Beautifully landscaped and fully fenced for privacy, this oasis is ideal for summer gatherings or quiet evenings under the stars. Enjoy your morning coffee on the large deck, surrounded by vibrant plants, or unwind by the fire pit as the sun sets. The front porch, bathed in evening sunlight, is the perfect spot to relax and watch the world go by. This immaculate home is ready to welcome its next owners. Don't miss your chance to see it—call today to book your private viewing and experience all that this beautiful property



has to offer!

Built in 1977

Essential Information

| | |
|----------------|-------------|
| MLS® # | A2219171 |
| Price | \$624,500 |
| Bedrooms | 4 |
| Bathrooms | 3.00 |
| Full Baths | 2 |
| Half Baths | 1 |
| Square Footage | 1,217 |
| Acres | 0.12 |
| Year Built | 1977 |
| Type | Residential |
| Sub-Type | Detached |
| Style | 2 Storey |
| Status | Active |

Community Information

| | |
|-------------|----------------------------|
| Address | 407 Whiteridge Crescent Ne |
| Subdivision | Whitehorn |
| City | Calgary |
| County | Calgary |
| Province | Alberta |
| Postal Code | T1Y 2Y9 |

Amenities

| | |
|----------------|--|
| Parking Spaces | 3 |
| Parking | Parking Pad, Single Garage Detached, RV Access/Parking |
| # of Garages | 1 |

Interior

| | |
|-------------------|--|
| Interior Features | Built-in Features, Ceiling Fan(s), Granite Counters, Kitchen Island, No Smoking Home, Pantry, Track Lighting |
| Appliances | Convection Oven, Dishwasher, Freezer, Microwave Hood Fan, Refrigerator, Washer/Dryer, Window Coverings |
| Heating | Forced Air |
| Cooling | None |

| | |
|-----------------|------------------|
| Fireplace | Yes |
| # of Fireplaces | 1 |
| Fireplaces | Gas, Living Room |
| Has Basement | Yes |
| Basement | Finished, Full |

Exterior

| | |
|-------------------|--|
| Exterior Features | Balcony, BBQ gas line, Fire Pit, Garden, Private Yard, Rain Barrel/Cistern(s) |
| Lot Description | Back Lane, Back Yard, Front Yard, Garden, Interior Lot, Landscaped, Lawn, Level, Native Plants, Private, Street Lighting, Fruit Trees/Shrub(s) |
| Roof | Asphalt Shingle |
| Construction | Brick, Stucco, Vinyl Siding, Wood Frame |
| Foundation | Poured Concrete |

Additional Information

| | |
|----------------|---------------|
| Date Listed | May 8th, 2025 |
| Days on Market | 11 |
| Zoning | R-CG |

Listing Details

| | |
|----------------|---------|
| Listing Office | Charles |
|----------------|---------|

Data is supplied by Pillar 9â„¢ MLSÂ® System. Pillar 9â„¢ is the owner of the copyright in its MLSÂ® System. Data is deemed reliable but is not guaranteed accurate by Pillar 9â„¢. The trademarks MLSÂ®, Multiple Listing ServiceÂ® and the associated logos are owned by The Canadian Real Estate Association (CREA) and identify the quality of services provided by real estate professionals who are members of CREA. Used under license.