

\$298,000 - 146, 300 Marina Drive, Chestermere

MLS® #A2214028

\$298,000

2 Bedroom, 1.00 Bathroom, 767 sqft

Residential on 0.00 Acres

Westmere, Chestermere, Alberta

Welcome to the highly desired Chestermere Station! Boasting an amazing location, this top-floor, two-bedroom, one-bathroom condo offers a delightful open layout flooded with natural light. The spacious living area is perfect for unwinding or entertaining guests and flows beautifully into the well-appointed kitchen with modern amenities and generous cabinet storage. Both bedrooms are large with ample closet space, and filled with natural light throughout the day. Down the hall, a thoughtfully designed four-piece bathroom completes the space and continues to maintain the easy access for guests while still offering some privacy. In-suite laundry makes the dreaded laundry day a breeze! Oh, and did we mention the covered deck just off the living room for those beautiful summer nights? If you're searching for convenience, this is it with ample shopping options just a quick walk away. Enjoy the ease of access to local shops and amenities, making everyday errands a breeze. Don't miss the chance to make this charming top-floor retreat your own. Contact your favorite agent today!

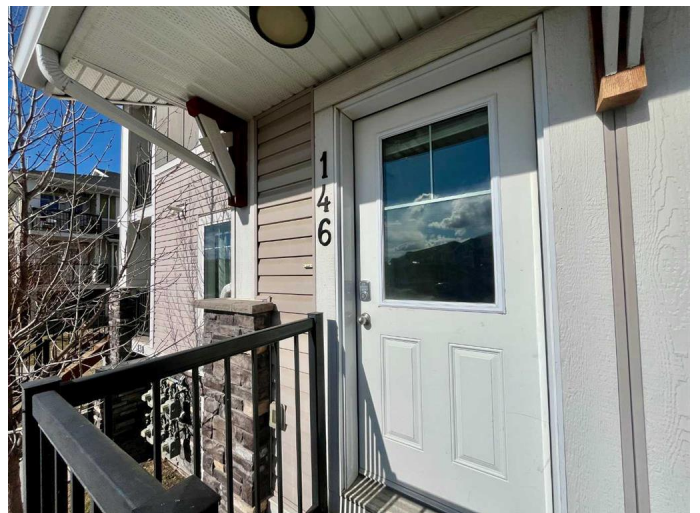
Built in 2012

Essential Information

MLS® # A2214028

Price \$298,000

Bedrooms 2



Bathrooms	1.00
Full Baths	1
Square Footage	767
Acres	0.00
Year Built	2012
Type	Residential
Sub-Type	Row/Townhouse
Style	Stacked Townhouse
Status	Active

Community Information

Address	146, 300 Marina Drive
Subdivision	Westmere
City	Chestermere
County	Chestermere
Province	Alberta
Postal Code	T1X 0P6

Amenities

Amenities	Parking, Snow Removal, Trash, Visitor Parking, Gazebo
Parking Spaces	1
Parking	Stall

Interior

Interior Features	Open Floorplan, Storage
Appliances	Dishwasher, Electric Stove, Microwave Hood Fan, Refrigerator, Washer/Dryer
Heating	Forced Air, Natural Gas
Cooling	None
Basement	None

Exterior

Exterior Features	Balcony
Lot Description	Landscaped, Gazebo
Roof	Asphalt Shingle
Construction	Brick, Vinyl Siding, Wood Frame
Foundation	Poured Concrete

Additional Information

Date Listed	April 22nd, 2025
Days on Market	35
Zoning	R-1

Listing Details

Listing Office	CLEARVIEW PROPERTY MANAGEMENT LTD.
----------------	------------------------------------

Data is supplied by Pillar 9â„¢ MLS® System. Pillar 9â„¢ is the owner of the copyright in its MLS® System. Data is deemed reliable but is not guaranteed accurate by Pillar 9â„¢. The trademarks MLS®, Multiple Listing Service® and the associated logos are owned by The Canadian Real Estate Association (CREA) and identify the quality of services provided by real estate professionals who are members of CREA. Used under license.