

# \$420,000 - 393 Strathford Crescent, Strathmore

MLS® #A2213498

**\$420,000**

3 Bedroom, 1.00 Bathroom, 1,070 sqft

Residential on 0.11 Acres

Strathaven, Strathmore, Alberta

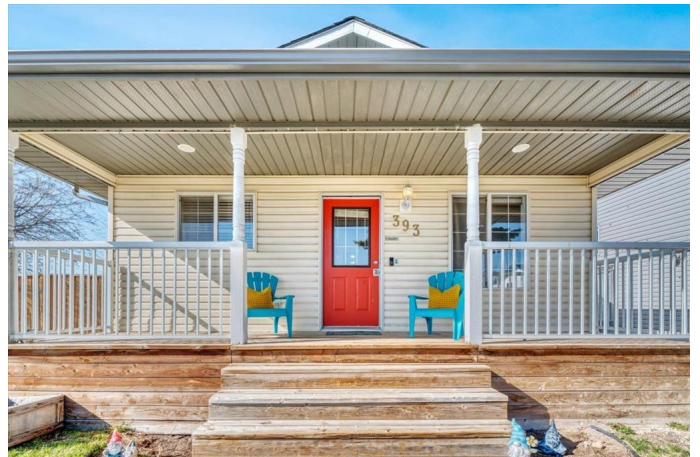
Prairie Views. Heated Garage. Room for All Your Toys.

Tucked on a sunny corner lot in Strathaven, this clean and well-cared-for bungalow offers the space, charm, and potential youâ€™ve been searching for. Letâ€™s start with the extras: back lane access to a heated double garage with a 9' overhead door, RV/toy parking, and endless prairie views as your backdrop.

Step up to the covered front verandaâ€”a perfect perch for morning coffees or chats with the neighbours. Inside, the main floor offers a bright and functional layout, featuring three spacious bedrooms, a large full bath, and the underrated hero of everyday living: main floor laundry.

The living room is filled with natural light thanks to a huge picture window, and the durable laminate flooring keeps it low-maintenance and family-friendly. The kitchen has a warm, classic vibe with oak-style cabinets and a pass-through to a roomy dining area thatâ€™s ready for dinner parties or pancake Sundays. Plusâ€”direct access to the side deck means BBQ season is always within reach.

The primary bedroom and the two additional bedrooms are freshly painted and move-in ready.



But the real opportunity? Itâ€™s downstairs.  
The basement is wide open with roughed-in plumbingâ€”ready for whatever you imagine: extra bedrooms, a movie lounge, home gym, or that dream office youâ€™ve been Pinterest-boarding.

Located on the north edge of town, youâ€™re close to parks, schools, and everything Strathmore has to offerâ€”with that wide-open-country feel you canâ€™t fake.

Ready to make your move?  
This is the kind of home you donâ€™t just viewâ€”you picture yourself living in. Letâ€™s go take a look.

Built in 1999

### Essential Information

MLS® #	A2213498
Price	\$420,000
Bedrooms	3
Bathrooms	1.00
Full Baths	1
Square Footage	1,070
Acres	0.11
Year Built	1999
Type	Residential
Sub-Type	Detached
Style	Bungalow
Status	Active

### Community Information

Address	393 Strathford Crescent
Subdivision	Strathaven
City	Strathmore
County	Wheatland County
Province	Alberta

Postal Code T1P 1P1

### Amenities

Parking Spaces 6

Parking Double Garage Detached, Garage Faces Rear, Heated Garage, Off Street

# of Garages 2

### Interior

Interior Features Bathroom Rough-in, No Smoking Home

Appliances Dishwasher, Dryer, Electric Stove, Microwave, Refrigerator, Washer, Window Coverings

Heating Forced Air, Natural Gas

Cooling None

Has Basement Yes

Basement Full, Unfinished

### Exterior

Exterior Features Balcony, Barbecue, Fire Pit, Private Yard

Lot Description Back Lane, Back Yard, Corner Lot, Front Yard, Fruit Trees/Shrub(s), Landscaped

Roof Asphalt Shingle

Construction Concrete, Vinyl Siding, Wood Frame

Foundation Poured Concrete

### Additional Information

Date Listed April 26th, 2025

Days on Market 23

Zoning R1

### Listing Details

Listing Office RE/MAX Key

Data is supplied by Pillar 9â„¢ MLSÂ® System. Pillar 9â„¢ is the owner of the copyright in its MLSÂ® System. Data is deemed reliable but is not guaranteed accurate by Pillar 9â„¢. The trademarks MLSÂ®, Multiple Listing ServiceÂ® and the associated logos are owned by The Canadian Real Estate Association (CREA) and identify the quality of services provided by real estate professionals who are members of CREA. Used under license.