

\$500,000 - 908, 1121 6 Avenue Sw, Calgary

MLS® #A2209499

\$500,000

3 Bedroom, 2.00 Bathroom, 1,385 sqft
Residential on 0.00 Acres

Downtown West End, Calgary, Alberta

RARE FIND! READY TO MOVE IN ONE OF A
KIND URBAN LIVING DOWNTOWN WEST
END!

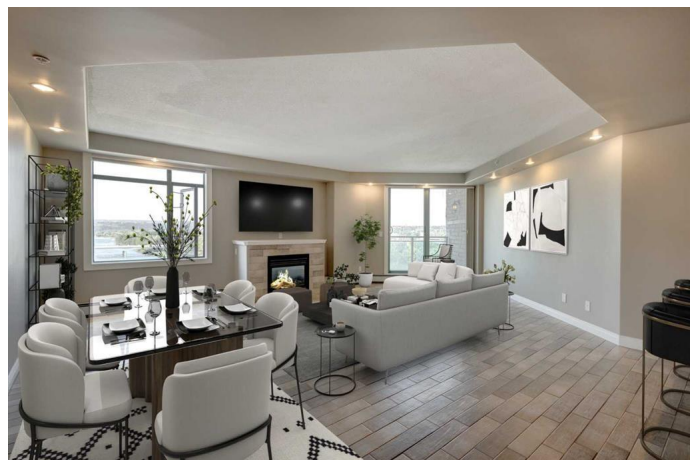
3 BEDROOM, 2 FULL BATHROOM, 1384 SQ
FT CONDO UNIT w/ 2 TITLED HEATED
PARKING SPOTS, and 2 WEST FACING
BALCONIES WITH 180 DEGREE
UNOBSTRUCTED MOUNTAIN & BOW
RIVER VIEWS.

This impeccable unit will impress you with
features such as ceramic tile flooring, updated
bathrooms, modern kitchen design with granite
countertops, knock-down ceilings, and NEW
PAINT (all walls,

doors, trims & fireplace mantle).

Stepping inside, you will notice the
meticulously maintained interior with upgraded
ceramic tile flooring and fresh paint
throughout. The open concept layout
seamlessly connects the foyer, kitchen, eating
area, dining room and living room, creating the
perfect space for gathering with family or
friends and everyday living. The gourmet
kitchen features stainless steel appliances,
modern cabinets offering ample storage and
granite countertops with an eating area. The
cozy living room features a gas fireplace, with
a patio door leading out to your WEST facing
balcony and a gas line for your outdoor BBQ
needs.

The primary bedroom features a double closet
and an updated 6-piece ENSUITE bathroom.
There are 2 additional bedrooms providing



versatility, whether it be for family, guests, a home office, or hobby space, finishing off the unit you will discover the 4-piece bathroom with a new toilet and faucet. This unit comes with the convenience of IN-UNIT LAUNDRY, good sized in-unit storage room, 2 heated underground titled parking spots. This well maintained building comes with 2 elevators and plenty of visitor parking, with on-site security/concierge services, party/games rooms (ping pong & pool table) and a private gym. Excellent location that is minutes walking distance to Kerby LRT station, shops, restaurants, downtown and close to Bow River + pathways. Easy access to Bow Trail, Crowchild and Memorial Drive. Don't miss this fantastic opportunity, be the first to view this amazing unit! Call for your private viewing today!

Built in 2003

Essential Information

MLS® #	A2209499
Price	\$500,000
Bedrooms	3
Bathrooms	2.00
Full Baths	2
Square Footage	1,385
Acres	0.00
Year Built	2003
Type	Residential
Sub-Type	Apartment
Style	Single Level Unit
Status	Active

Community Information

Address	908, 1121 6 Avenue Sw
Subdivision	Downtown West End
City	Calgary

County	Calgary
Province	Alberta
Postal Code	T2P 5J4

Amenities

Amenities	Elevator(s), Recreation Room, Visitor Parking, Bicycle Storage, Fitness Center, Party Room, Secured Parking
Parking Spaces	2
Parking	Heated Garage, Parkade, Titled, Underground

Interior

Interior Features	Kitchen Island, Open Floorplan, Walk-In Closet(s), Granite Counters, No Animal Home, No Smoking Home, Storage
Appliances	Dishwasher, Range Hood, Refrigerator, Window Coverings, Electric Stove, Washer/Dryer Stacked
Heating	Baseboard, Natural Gas, Hot Water
Cooling	None
Fireplace	Yes
# of Fireplaces	1
Fireplaces	Gas
# of Stories	16

Exterior

Exterior Features	Balcony, BBQ gas line
Construction	Concrete, Stone

Additional Information

Date Listed	May 6th, 2025
Days on Market	115
Zoning	DC (pre 1P2007)

Listing Details

Listing Office	RE/MAX Realty Professionals
----------------	-----------------------------

Data is supplied by Pillar 9â„¢ MLS® System. Pillar 9â„¢ is the owner of the copyright in its MLS® System. Data is deemed reliable but is not guaranteed accurate by Pillar 9â„¢. The trademarks MLS®, Multiple Listing Service® and the associated logos are owned by The Canadian Real Estate Association (CREA) and identify the quality of services provided by real estate professionals who are members of CREA. Used under license.