

\$450,000 - 28 Kinlea Common Nw, Calgary

MLS® #A2202693

\$450,000

2 Bedroom, 3.00 Bathroom, 1,404 sqft

Residential on 0.02 Acres

Kincora, Calgary, Alberta

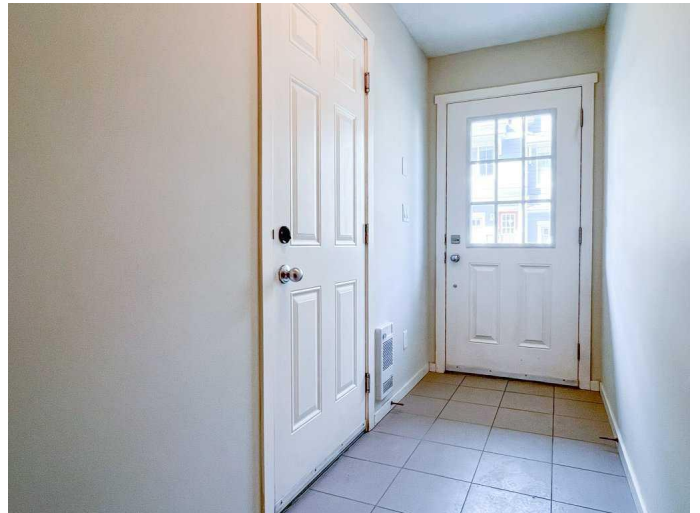
Modern Townhouse in Kincora â€“ 2 Master Bedrooms, 2.5 Baths & Double Tandem Garage!

Welcome to 28 Kinlea Common NW, a stylish townhouse in the desirable community of Kincora! This move-in ready home features two spacious master bedrooms, each with its own private ensuite, plus a double tandem garage. The double tandem garage offers room for two vehicles plus extra storage or workspace. Conveniently located steps from T&T Supermarket, Walmart, restaurants, and transit, with easy access to Shaganappi & Stoney Trail.

Built in 2013

Essential Information

MLS® #	A2202693
Price	\$450,000
Bedrooms	2
Bathrooms	3.00
Full Baths	2
Half Baths	1
Square Footage	1,404
Acres	0.02
Year Built	2013
Type	Residential
Sub-Type	Row/Townhouse



Style	Townhouse
Status	Active

Community Information

Address	28 Kinlea Common Nw
Subdivision	Kincora
City	Calgary
County	Calgary
Province	Alberta
Postal Code	T3R 0S2

Amenities

Amenities	Snow Removal, Visitor Parking
Parking Spaces	2
Parking	Double Garage Attached
# of Garages	2

Interior

Interior Features	High Ceilings, No Animal Home, No Smoking Home, Open Floorplan
Appliances	Dishwasher, Electric Stove, Microwave, Range Hood, Refrigerator, Washer/Dryer
Heating	Forced Air
Cooling	None
Basement	None

Exterior

Exterior Features	Balcony
Lot Description	Interior Lot
Roof	Asphalt Shingle
Construction	Composite Siding, Stone, Wood Frame
Foundation	Poured Concrete

Additional Information

Date Listed	March 14th, 2025
Days on Market	109
Zoning	M-1

Listing Details

Listing Office	Royal LePage Benchmark
----------------	------------------------

Data is supplied by Pillar 9â„¢ MLS® System. Pillar 9â„¢ is the owner of the copyright in its MLS® System. Data is deemed reliable but is not guaranteed accurate by Pillar 9â„¢. The trademarks MLS®, Multiple Listing Service® and the associated logos are owned by The Canadian Real Estate Association (CREA) and identify the quality of services provided by real estate professionals who are members of CREA. Used under license.