

# \$649,000 - 84 Waterford Manor, Chestermere

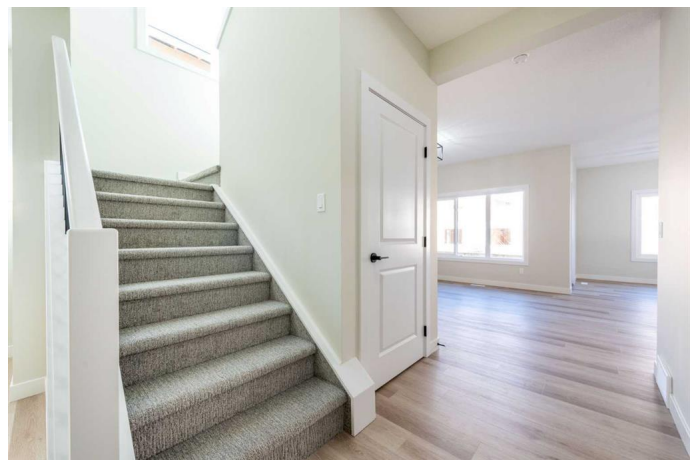
MLS® #A2200487

**\$649,000**

3 Bedroom, 3.00 Bathroom, 1,913 sqft  
Residential on 0.08 Acres

NONE, Chestermere, Alberta

**\*\*\*QUICK POSSESSION\*\*\* FRONT DOUBLE GARAGE, CORNER LOT, 3 Bedrooms + Bonus Room + Den | 2.5 Baths | The most popular Moana model, on over 34 feet wide lot, situated in the Waterford Community, minutes from the lake. Experience the epitome of open concept living, featuring upgrades such as 9 feet Ceilings on main floor and basement, metal spindles on railing, 3cm quartz countertops, LVP flooring, under mount sinks convenient upstairs laundry and so much more! Great room includes an electric fireplace which adds style and warmth perfect for chilly nights. The kitchen is completed with a huge island, perfect for gathering families and friends, soft close cabinets and drawers throughout, spacious pantry plus extra counter space, new appliance package including chimney exhaust fan, smooth top electric range, built-in microwave and UPGRADED refrigerator and dishwasher. The dining room can host a big family. Upstairs, indulge in the comfort of your perfectly sized central bonus room, ideal for streaming your favourite movies. Retreat to the spacious master suite with an ensuite and walk-in closet for a relaxing escape. The conveniently located laundry room and two secondary bedrooms, both with walk-in-closets complete the second level. The basement is unfinished but comes with 9 feet ceiling, separate side entrance and a mechanical room moved to a corner. Proximity to the CALGARY, schools, diverse retail and culinary delights are just some of the**



highlights. Call to book your showing now !!!!!!!

Built in 2024

**Essential Information**

MLS® #	A2200487
Price	\$649,000
Bedrooms	3
Bathrooms	3.00
Full Baths	2
Half Baths	1
Square Footage	1,913
Acres	0.08
Year Built	2024
Type	Residential
Sub-Type	Semi Detached
Style	Side by Side, 2 Storey
Status	Active

**Community Information**

Address	84 Waterford Manor
Subdivision	NONE
City	Chestermere
County	Chestermere
Province	Alberta
Postal Code	T1X 2T9

**Amenities**

Parking Spaces	4
Parking	Double Garage Attached
# of Garages	2

**Interior**

Interior Features	Breakfast Bar, Vinyl Windows, Kitchen Island, No Animal Home, No Smoking Home, Pantry, Quartz Counters, Soaking Tub, Separate Entrance
Appliances	Dishwasher, Microwave, Refrigerator, Electric Range, Garage Control(s)
Heating	Forced Air, Natural Gas
Cooling	None

Fireplace	Yes
# of Fireplaces	1
Fireplaces	Electric
Has Basement	Yes
Basement	Full, Unfinished

## Exterior

Exterior Features	Lighting
Lot Description	Front Yard, Landscaped, Rectangular Lot
Roof	Asphalt Shingle
Construction	Vinyl Siding, Wood Frame, Concrete, Mixed
Foundation	Poured Concrete

## Additional Information

Date Listed	March 7th, 2025
Days on Market	168
Zoning	R2

## Listing Details

Listing Office	URBAN-REALTY.ca
----------------	-----------------

Data is supplied by Pillar 9â„¢ MLS® System. Pillar 9â„¢ is the owner of the copyright in its MLS® System. Data is deemed reliable but is not guaranteed accurate by Pillar 9â„¢. The trademarks MLS®, Multiple Listing Service® and the associated logos are owned by The Canadian Real Estate Association (CREA) and identify the quality of services provided by real estate professionals who are members of CREA. Used under license.