

\$788,000 - 224 Eldorado Place Ne, Calgary

MLS® #A2199523

\$788,000

3 Bedroom, 2.00 Bathroom, 1,651 sqft
Residential on 0.14 Acres

Monterey Park, Calgary, Alberta

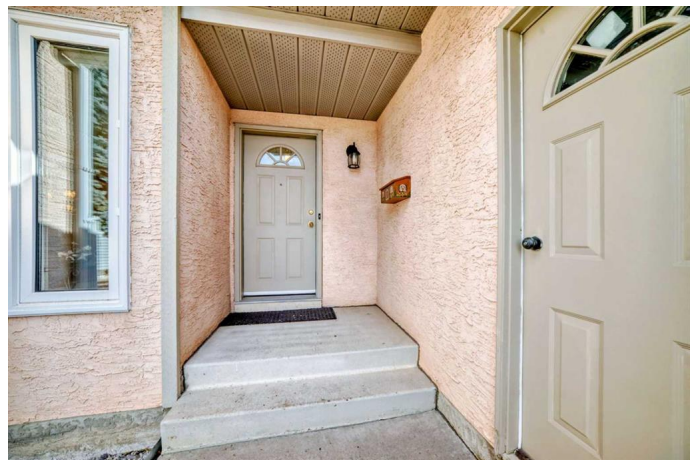
[Click brochure link for more details.](#)

Introducing an exquisite and rare find â€” a captivating 1600+ sq. feet BUNGALOW nestled on an expansive PIE-shaped lot in Monterey Park's highly sought-after community. This exceptional family home, a true gem, offers an unmatched blend of beauty, space, and value.

Situated on a quiet cul-de-sac, this residence provides the perfect haven for tranquility and safety, creating an ideal environment for children to play freely in the spacious backyard. The exterior of this residence is equally impressive, boasting eye-catching curb appeal with a well-maintained facade and landscaping that welcomes you home.

Built-in 1992, this smoke-free and pet-free haven comprises 3 bedrooms and 2 full bathrooms, accompanied by a two-car front attached garage and an extensive landscaped backyard, fully fenced with a delightful sun deck. Perfectly positioned just minutes away from shopping, restaurants, transit, schools, and recreational activities, this home caters to the needs of modern living.

The recent upgrades, including a new roof in 2022, brand-new triple-pane windows with blinds in 2023, and a new fence in 2024 - a value of over \$50,000. All updates add a touch of modern luxury to this meticulously maintained dwelling.



Step inside to discover a spacious, clean interior with an ideal layout for comfortable living. The soothing neutral color palette sets the stage for your personal décor. The Luxurious Master Bedroom boasts his and hers closets and an ensuite with a jetted tub and shower.

The secondary bedrooms with huge closets, offer versatility, allowing you to use them as an office, guest room, nursery, or playroom. The formal Living / Dining room is spacious with a 9 ft ceiling.

Entertain effortlessly in the dining room and family room has a fireplace, and built-in woodwork exudes warmth and charm, creating a cozy atmosphere for relaxation, and enjoy the fully equipped kitchen featuring stainless steel appliances, marble countertops, and a welcoming breakfast nook. Convenience is key with the washer and dryer on the same floor, accompanied by ample storage space.

The partially developed basement with a rough-in for a future bathroom opens the door to endless possibilities, providing an open-concept layout limited only by your imagination.

Built in 1992

Essential Information

MLS® #	A2199523
Price	\$788,000
Bedrooms	3
Bathrooms	2.00
Full Baths	2
Square Footage	1,651
Acres	0.14
Year Built	1992

Type	Residential
Sub-Type	Detached
Style	Bungalow
Status	Active

Community Information

Address	224 Eldorado Place Ne
Subdivision	Monterey Park
City	Calgary
County	Calgary
Province	Alberta
Postal Code	T1Y 6T3

Amenities

Parking Spaces	4
Parking	Double Garage Attached
# of Garages	2

Interior

Interior Features	High Ceilings, Low Flow Plumbing Fixtures, No Animal Home, No Smoking Home, Vinyl Windows, Jetted Tub, See Remarks
Appliances	See Remarks
Heating	Forced Air
Cooling	None
Fireplace	Yes
# of Fireplaces	1
Fireplaces	Wood Burning
Has Basement	Yes
Basement	Full, Unfinished

Exterior

Exterior Features	None
Lot Description	Back Yard, Cul-De-Sac, Landscaped, Low Maintenance Landscape, See Remarks, Back Lane
Roof	Asphalt Shingle
Construction	Concrete, Stucco, Wood Frame, Wood Siding
Foundation	Poured Concrete

Additional Information

Date Listed	March 7th, 2025
Days on Market	55
Zoning	R-CG

Listing Details

Listing Office	Honestdoor Inc.
----------------	-----------------

Data is supplied by Pillar 9â„¢ MLSÂ® System. Pillar 9â„¢ is the owner of the copyright in its MLSÂ® System. Data is deemed reliable but is not guaranteed accurate by Pillar 9â„¢. The trademarks MLSÂ®, Multiple Listing ServiceÂ® and the associated logos are owned by The Canadian Real Estate Association (CREA) and identify the quality of services provided by real estate professionals who are members of CREA. Used under license.