

# **\$184,900 - 339 10636 120 Street, Edmonton**

MLS® #E4457881

**\$184,900**

2 Bedroom, 2.00 Bathroom, 1,044 sqft  
Condo / Townhouse on 0.00 Acres

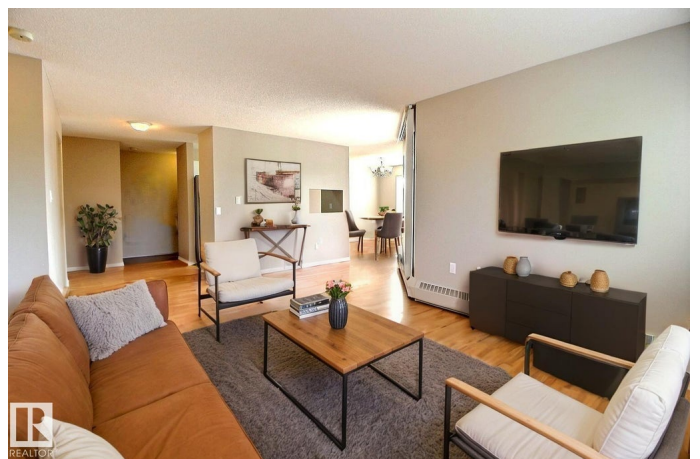
Queen Mary Park, Edmonton, AB

Great opportunity to own in The Pointe Downtown! This spacious 2-bedroom, 2-bathroom unit offers over 1,000 sqft and 1 covered parking stall. One of the largest units in the complex with FRESH PAINT, NEWER BOSCH DISHWASHER & NEW WINDOWS. Convenient for all local amenities and Grant MacEwan. Gally Kitchen open is open to the dinning space living room. Patio doors leading to a nicely sized South/West facing balcony. The private Primary suite offers a walk-through closet which leads to a 4-piece ensuite. The second bedroom is located on the other side of the unit along with the main 4 piece bathroom and in suite laundry/storage room. This is an ideal unit for the first time buyer or investor. all measurements are approximate and should be confirmed by purchaser. Floor area from condo plan. Conveniently located near Oliver Square, Safeway, shopping, restaurants, Grant MacEwan University and Rogers Place plus easy access to public transportation. This complex is well maintained and offers plenty

Built in 1993

## **Essential Information**

MLS® #	E4457881
Price	\$184,900



Bedrooms	2
Bathrooms	2.00
Full Baths	2
Square Footage	1,044
Acres	0.00
Year Built	1993
Type	Condo / Townhouse
Sub-Type	Lowrise Apartment
Style	Single Level Apartment
Status	Active

### **Community Information**

Address	339 10636 120 Street
Area	Edmonton
Subdivision	Queen Mary Park
City	Edmonton
County	ALBERTA
Province	AB
Postal Code	T5H 4L5

### **Amenities**

Amenities	No Animal Home, No Smoking Home, Parking-Visitor, Security Door, Vinyl Windows
Parking Spaces	1
Parking	Single Carport, Stall

### **Interior**

Interior Features	ensuite bathroom
Appliances	Dishwasher-Built-In, Hood Fan, Refrigerator, Stacked Washer/Dryer, Stove-Electric, Window Coverings
Heating	Baseboard, Hot Water, Natural Gas
# of Stories	4
Stories	1
Has Basement	Yes
Basement	None, No Basement

### **Exterior**

Exterior	Wood, Stucco
Exterior Features	Landscaped, Park/Reserve, Schools, Shopping Nearby

Roof	Asphalt Shingles
Construction	Wood, Stucco
Foundation	Concrete Perimeter

**Additional Information**

Date Listed	September 15th, 2025
Days on Market	1
Zoning	Zone 08
Condo Fee	\$526

DATA IS DEEMED RELIABLE BUT IS NOT GUARANTEED ACCURATE BY THE REALTORS® ASSOCIATION OF EDMONTON. COPYRIGHT 2025 BY THE REALTORS® ASSOCIATION OF EDMONTON. ALL RIGHTS RESERVED.Trademarks are owned or controlled by the Canadian Real Estate Association (CREA) and identify real estate professionals who are members of CREA (REALTOR®, REALTORS®) and/or the quality of services they provide (MLS®, Multiple Listing Service®)

Listing information last updated on September 16th, 2025 at 4:47am MDT