

\$535,000 - 1436 29 Street, Edmonton

MLS® #E4455493

\$535,000

3 Bedroom, 2.50 Bathroom, 1,841 sqft

Single Family on 0.00 Acres

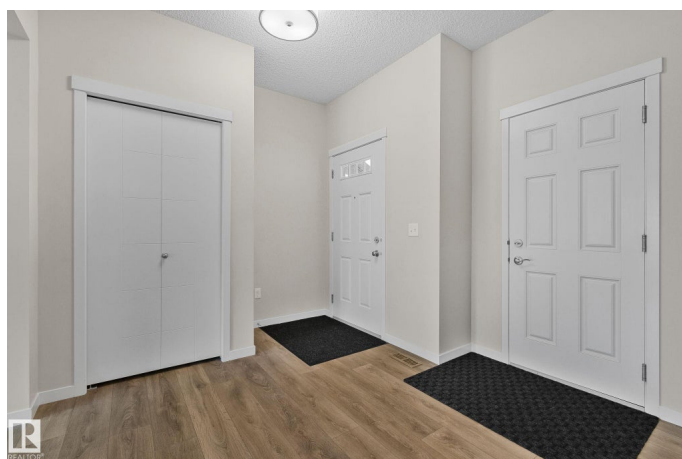
Laurel, Edmonton, AB

Welcome to this lovely east-facing home on a regular lot in South Edmontonâ€™s Laurel communityâ€”a great location close to Mahubay Park, schools, Anthony Henday, and all major stores. This home offers 3 bedrooms, 2.5 bathrooms, and a bright open layout. On the main floor, the kitchen, dining, and living areas flow together, making it perfect for everyday living. Youâ€™ll also find a welcoming foyer, main floor laundry, a guest bathroom, and an extended kitchen with lots of cabinets. Upstairs starts with a spacious bonus room. The primary bedroom has its own walk-in closet and ensuite, while another bedroom also includes a walk-in closet. A third bedroom and full bath complete the upper level. Outside, enjoy a customized patio backyard and the bonus of an EV charger and fully finished garage. This well-kept home is move-in ready and located in the heart of Laurelâ€”one of South Edmontonâ€™s most convenient and family-friendly areas.

Built in 2017

Essential Information

MLS® #	E4455493
Price	\$535,000
Bedrooms	3
Bathrooms	2.50



Full Baths	2
Half Baths	1
Square Footage	1,841
Acres	0.00
Year Built	2017
Type	Single Family
Sub-Type	Detached Single Family
Style	2 Storey
Status	Active

Community Information

Address	1436 29 Street
Area	Edmonton
Subdivision	Laurel
City	Edmonton
County	ALBERTA
Province	AB
Postal Code	T6T 1A8

Amenities

Amenities	On Street Parking, Closet Organizers, Detectors Smoke, Fire Pit, Hot Water Electric, No Animal Home, No Smoking Home, Parking-Extra, Parking-Plug-Ins, Patio, See Remarks, Natural Gas Stove Hookup
Parking	2 Outdoor Stalls, 220 Volt Wiring, Double Garage Attached

Interior

Interior Features	ensuite bathroom
Appliances	Dishwasher - Energy Star, Dryer, Garage Control, Garage Opener, Hood Fan, Humidifier-Power(Furnace), Refrigerator-Energy Star, Stove-Gas, Washer - Energy Star, Window Coverings, TV Wall Mount, Curtains and Blinds
Heating	Forced Air-1, Natural Gas
Stories	2
Has Basement	Yes
Basement	Full, Unfinished

Exterior

Exterior	Wood, Vinyl
Exterior Features	Airport Nearby, Fenced, Landscaped, Level Land, Park/Reserve, Playground Nearby, Public Swimming Pool, Public Transportation,

	Schools, Shopping Nearby
Roof	Asphalt Shingles
Construction	Wood, Vinyl
Foundation	Concrete Perimeter

School Information

Elementary	Svend Hansen School
High	Elder Dr. Francis Whiskey

Additional Information

Date Listed	August 30th, 2025
Days on Market	4
Zoning	Zone 30

DATA IS DEEMED RELIABLE BUT IS NOT GUARANTEED ACCURATE BY THE REALTORS® ASSOCIATION OF EDMONTON. COPYRIGHT 2025 BY THE REALTORS® ASSOCIATION OF EDMONTON. ALL RIGHTS RESERVED. Trademarks are owned or controlled by the Canadian Real Estate Association (CREA) and identify real estate professionals who are members of CREA (REALTOR®, REALTORS®) and/or the quality of services they provide (MLS®, Multiple Listing Service®)

Listing information last updated on September 3rd, 2025 at 4:02pm MDT