

\$519,900 - 1727 Plum Crescent, Edmonton

MLS® #E4453823

\$519,900

3 Bedroom, 2.50 Bathroom, 1,662 sqft
Single Family on 0.00 Acres

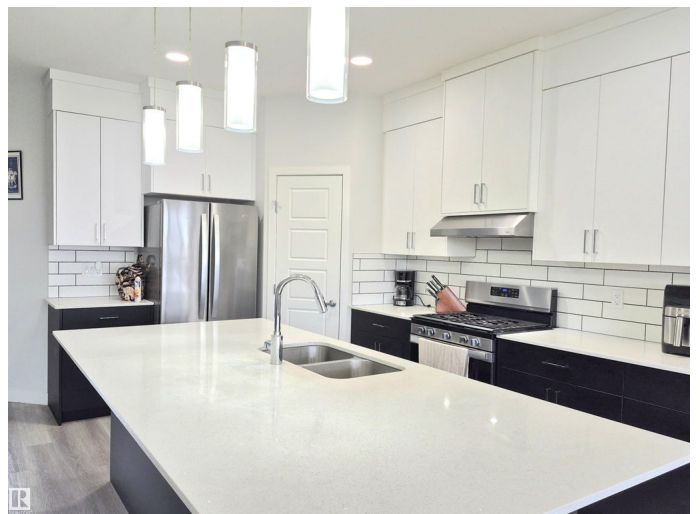
The Orchards At Ellerslie, Edmonton, AB

Welcome to this open-concept half duplex that offers both comfort and functionality in one of the most sought-after neighborhoods. Upon entry, you're greeted by a grand kitchen featuring ample cabinetry, a large central island, and plenty of storage perfect for entertaining or everyday living. The kitchen flows seamlessly into a cozy living room and a dedicated dining area, with direct access to a beautifully landscaped, massive backyard. A convenient 2-piece powder room completes the main floor. Upstairs, you'll find three spacious bedrooms, including a primary suite with a walk-in closet and private ensuite. This level also includes a bonus room filled with natural light, a full bathroom, and a separate laundry room for added convenience. The basement is unfinished and ready for your personal touch ideal for future development or additional storage. The single attached garage provides even more storage space. Located close to schools, parks, shopping, and all essential amenities.

Built in 2023

Essential Information

MLS® #	E4453823
Price	\$519,900
Bedrooms	3



Bathrooms	2.50
Full Baths	2
Half Baths	1
Square Footage	1,662
Acres	0.00
Year Built	2023
Type	Single Family
Sub-Type	Half Duplex
Style	2 Storey
Status	Active

Community Information

Address	1727 Plum Crescent
Area	Edmonton
Subdivision	The Orchards At Ellerslie
City	Edmonton
County	ALBERTA
Province	AB
Postal Code	T6X 1Z1

Amenities

Amenities	Ceiling 9 ft., Deck, Detectors Smoke
Parking	Single Garage Attached

Interior

Interior Features	ensuite bathroom
Appliances	Dishwasher-Built-In, Dryer, Hood Fan, Refrigerator, Washer
Heating	Forced Air-1, Natural Gas
Stories	2
Has Basement	Yes
Basement	Full, Unfinished

Exterior

Exterior	Wood, Vinyl
Exterior Features	Fenced, Landscaped, Park/Reserve, Playground Nearby, Public Transportation, Schools, Shopping Nearby
Roof	Asphalt Shingles
Construction	Wood, Vinyl
Foundation	Concrete Perimeter

Additional Information

Date Listed	August 20th, 2025
Days on Market	17
Zoning	Zone 53
HOA Fees	360
HOA Fees Freq.	Annually

DATA IS DEEMED RELIABLE BUT IS NOT GUARANTEED ACCURATE BY THE REALTORS® ASSOCIATION OF EDMONTON. COPYRIGHT 2025 BY THE REALTORS® ASSOCIATION OF EDMONTON. ALL RIGHTS RESERVED. Trademarks are owned or controlled by the Canadian Real Estate Association (CREA) and identify real estate professionals who are members of CREA (REALTOR®, REALTORS®) and/or the quality of services they provide (MLS®, Multiple Listing Service®)

Listing information last updated on September 5th, 2025 at 10:32pm MDT