

\$99,999 - 203 9028 Jasper Av, Edmonton

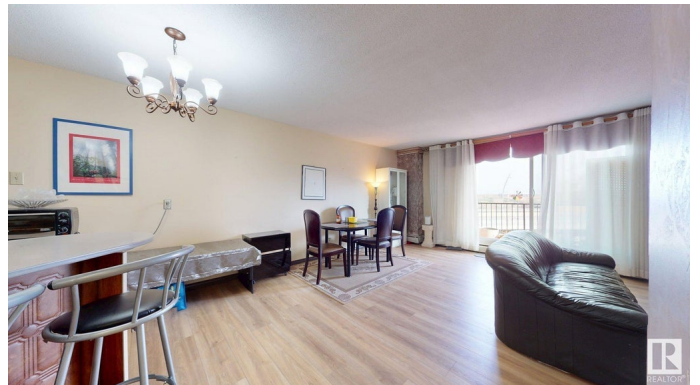
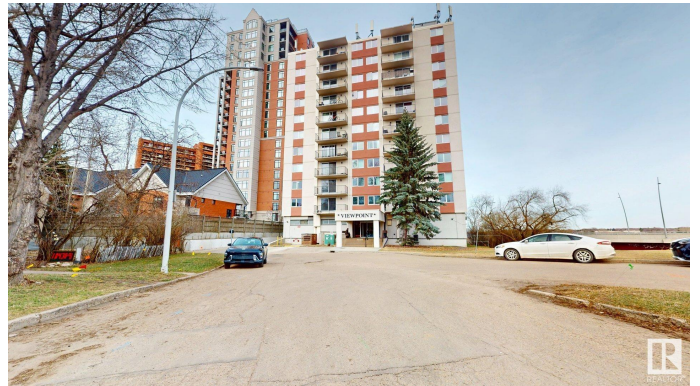
MLS® #E4449853

\$99,999

2 Bedroom, 1.00 Bathroom, 903 sqft
Condo / Townhouse on 0.00 Acres

Boyle Street, Edmonton, AB

Downtown Condo with Stunning River Valley Views & All Utilities Included! This bright and spacious 2-bedroom, 1-bath condo offers unbeatable value in the heart of downtown Edmonton. Enjoy breathtaking panoramic views of the River Valley from your living space and experience true convenience with all utilities included – HEAT, WATER & ELECTRICITY – making this an ideal choice for first-time buyers, students, young professionals, or investors. Additional features include: One assigned Underground PARKING stall & Secure STORAGE space for added convenience. Close proximity to the Ice District, Commonwealth Recreation Centre, LRT, shopping, restaurants, cafés, nightlife, and the River Valley walking/biking trails. Whether you’re looking to live, rent, or invest, this property is a smart move in one of Edmonton’s most desirable central communities.



Built in 1971

Essential Information

MLS® #	E4449853
Price	\$99,999
Bedrooms	2
Bathrooms	1.00
Full Baths	1

Square Footage	903
Acres	0.00
Year Built	1971
Type	Condo / Townhouse
Sub-Type	Apartment High Rise
Style	Single Level Apartment
Status	Active

Community Information

Address	203 9028 Jasper Av
Area	Edmonton
Subdivision	Boyle Street
City	Edmonton
County	ALBERTA
Province	AB
Postal Code	T5H 3S8

Amenities

Amenities	See Remarks
Parking	Underground

Interior

Appliances	Dishwasher-Built-In, Hood Fan, Refrigerator, Stove-Electric
Heating	Hot Water, See Remarks
# of Stories	11
Stories	1
Has Basement	Yes
Basement	None, No Basement

Exterior

Exterior	Brick
Exterior Features	Golf Nearby, Playground Nearby, Public Transportation, River Valley View, River View, Shopping Nearby, View City, View Downtown
Roof	Tar & Gravel
Construction	Brick
Foundation	Concrete Perimeter

Additional Information

Date Listed	July 25th, 2025
-------------	-----------------

Days on Market	9
Zoning	Zone 13
Condo Fee	\$866

DATA IS DEEMED RELIABLE BUT IS NOT GUARANTEED ACCURATE BY THE REALTORS® ASSOCIATION OF EDMONTON. COPYRIGHT 2025 BY THE REALTORS® ASSOCIATION OF EDMONTON. ALL RIGHTS RESERVED. Trademarks are owned or controlled by the Canadian Real Estate Association (CREA) and identify real estate professionals who are members of CREA (REALTOR®, REALTORS®) and/or the quality of services they provide (MLS®, Multiple Listing Service®)

Listing information last updated on August 3rd, 2025 at 5:17pm MDT