

\$699,900 - 1245 26a Street, Edmonton

MLS® #E4448692

\$699,900

3 Bedroom, 3.00 Bathroom, 2,332 sqft

Single Family on 0.00 Acres

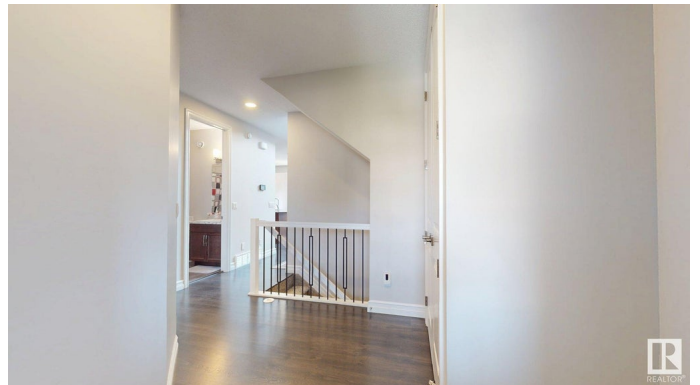
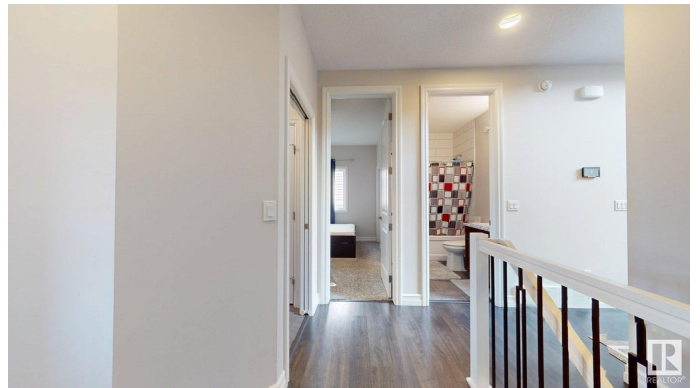
Laurel, Edmonton, AB

Quality built house on a regular 34ft wide lot in Laurel has 4 Bedrooms+3 Full washrooms with Side Entry checks all requirements that you are looking for. Welcoming Entry leads to the open to above living room with Gas Fireplace, Main floor Bedroom and Full bathroom and yes along with a huge kitchen you have a SPICE KITCHEN as well, tons of cabinets and granite counter tops and SS appliances. Laundry is conveniently located on main floor. Metal railing staircase leads to the upper floor with a huge bonus room, a primary bedroom with a luxurious 5-pc ensuite. 2 other bedrooms and a 5-pc bathroom with soaker tub & double sinks. Imagine using all bedrooms as master bedrooms, RARE FIND-Separate ENTRY to basement for future projects. Close to Rec ctr, K-9 & High School with an easy access to Anthony Henday /EIA

Built in 2020

Essential Information

MLS® #	E4448692
Price	\$699,900
Bedrooms	3
Bathrooms	3.00
Full Baths	3
Square Footage	2,332
Acres	0.00



Year Built	2020
Type	Single Family
Sub-Type	Detached Single Family
Style	2 Storey
Status	Active

Community Information

Address	1245 26a Street
Area	Edmonton
Subdivision	Laurel
City	Edmonton
County	ALBERTA
Province	AB
Postal Code	T6T 2J4

Amenities

Amenities	Ceiling 9 ft., Deck, No Animal Home, No Smoking Home
Parking	Double Garage Attached

Interior

Interior Features	ensuite bathroom
Appliances	Dishwasher-Built-In, Dryer, Hood Fan, Microwave Hood Fan, Refrigerator, Stove-Countertop Electric, Stove-Electric, Washer
Heating	Forced Air-1, Natural Gas
Stories	2
Has Basement	Yes
Basement	Full, Unfinished

Exterior

Exterior	Wood, Stone, Vinyl
Exterior Features	Landscaped, Playground Nearby, Public Swimming Pool, Public Transportation
Roof	Asphalt Shingles
Construction	Wood, Stone, Vinyl
Foundation	Concrete Perimeter

Additional Information

Date Listed	July 18th, 2025
Days on Market	2

Zoning

Zone 30

DATA IS DEEMED RELIABLE BUT IS NOT GUARANTEED ACCURATE BY THE REALTORS® ASSOCIATION OF EDMONTON. COPYRIGHT 2025 BY THE REALTORS® ASSOCIATION OF EDMONTON. ALL RIGHTS RESERVED. Trademarks are owned or controlled by the Canadian Real Estate Association (CREA) and identify real estate professionals who are members of CREA (REALTOR®, REALTORS®) and/or the quality of services they provide (MLS®, Multiple Listing Service®)

Listing information last updated on July 20th, 2025 at 4:17pm MDT