

## \$425,000 - 11042 76 Street, Edmonton

MLS® #E4448402

**\$425,000**

4 Bedroom, 2.00 Bathroom, 1,325 sqft  
Single Family on 0.00 Acres

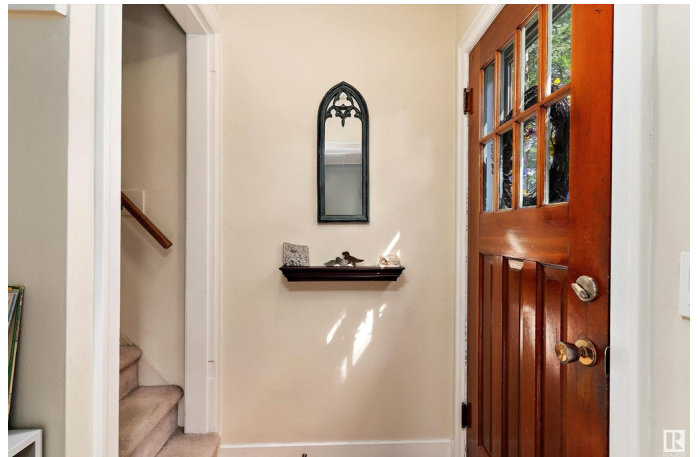
Cromdale, Edmonton, AB

Welcome to this charming 1.5-storey home in desirable Cromdale/Virginia Park, backing onto green space with quick access to the ravine, river valley, and Concordia. Featuring 4 bedrooms and 2 full baths, this home offers a cozy yet spacious layout with tons of natural light. The main floor boasts hardwood floors and a beautiful kitchen with rich wood cabinetry, large island and stainless steel appliances including a gas stove. The main bath features Italian tile and a lovely, deep soaker tub for ultimate relaxation. Two bedrooms on the main, two up, plus a second full bath. The basement includes a large laundry room and clean, unfinished space. Enjoy the big backyard with a large deck and lush green grass, perfect for hosting and enjoying summer days outside. Steps to parks, schools, coffee shop, grocery, downtown, and transit!

Built in 1947

### Essential Information

MLS® #	E4448402
Price	\$425,000
Bedrooms	4
Bathrooms	2.00
Full Baths	2
Square Footage	1,325



Acres	0.00
Year Built	1947
Type	Single Family
Sub-Type	Detached Single Family
Style	1 and Half Storey
Status	Active

### Community Information

Address	11042 76 Street
Area	Edmonton
Subdivision	Cromdale
City	Edmonton
County	ALBERTA
Province	AB
Postal Code	T5B 2C6

### Amenities

Amenities	Deck
Parking	Single Garage Detached

### Interior

Appliances	Dishwasher-Built-In, Dryer, Garage Control, Garage Opener, Refrigerator, Stove-Gas, Washer, Window Coverings
Heating	Forced Air-1, Natural Gas
Stories	2
Has Basement	Yes
Basement	Full, Unfinished

### Exterior

Exterior	Wood, Vinyl
Exterior Features	Back Lane, Backs Onto Park/Trees, Fenced, Golf Nearby, Landscaped, Park/Reserve, Playground Nearby, Public Transportation, Ravine View, Schools, Shopping Nearby
Roof	Asphalt Shingles
Construction	Wood, Vinyl
Foundation	Concrete Perimeter

### School Information

Elementary	Virginia Park, St Alphonsus
Middle	Highlands, St Alphonsus

High Eastglen, St Joseph

**Additional Information**

Date Listed July 17th, 2025  
Days on Market 4  
Zoning Zone 09

DATA IS DEEMED RELIABLE BUT IS NOT GUARANTEED ACCURATE BY THE REALTORS® ASSOCIATION OF EDMONTON. COPYRIGHT 2025 BY THE REALTORS® ASSOCIATION OF EDMONTON. ALL RIGHTS RESERVED.Trademarks are owned or controlled by the Canadian Real Estate Association (CREA) and identify real estate professionals who are members of CREA (REALTOR®, REALTORS®) and/or the quality of services they provide (MLS®, Multiple Listing Service®)  
Listing information last updated on July 21st, 2025 at 4:02am MDT