

\$154,900 - 101 10555 83 Avenue, Edmonton

MLS® #E4448161

\$154,900

1 Bedroom, 1.00 Bathroom, 621 sqft

Condo / Townhouse on 0.00 Acres

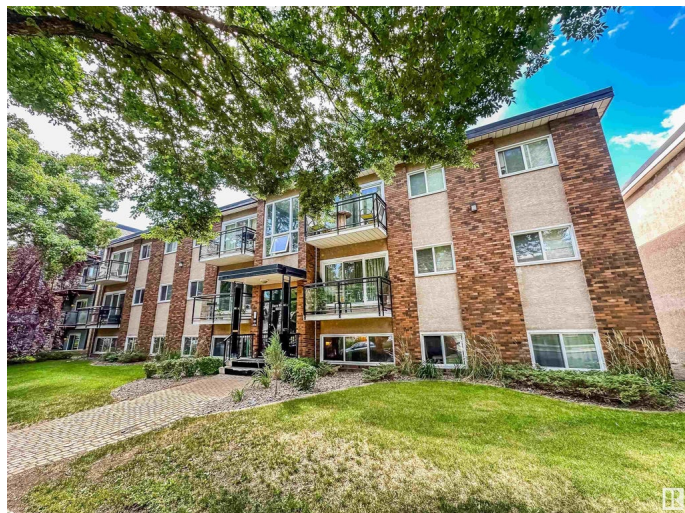
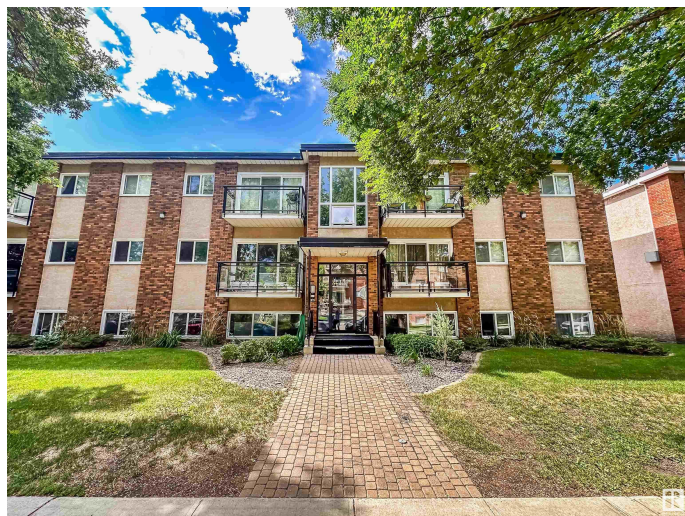
Strathcona, Edmonton, AB

STRATHCONA CONDO WALKABLE TO WHYTE AVE & THE RIVER VALLEY Located in charming Barry Manor, this upgraded 621 sqft 1-bedroom, 1-bath condo offers a low-maintenance lifestyle in one of Edmonton's most walkable neighbourhoods. Just steps to Whyte Avenue's restaurants, cafes, and boutiques, and close to groceries, the River Valley trail system, and the University of Alberta. Inside, enjoy granite countertops, stainless steel appliances, laminate flooring, and oversized windows that bring in great natural light. The spacious living and dining areas flow into a functional galley kitchen, while the king-sized bedroom includes a generous closet. Full 4-piece bath, in-suite laundry, private storage, and a covered assigned parking stall complete the package. Welcome home!

Built in 1968

Essential Information

MLS® #	E4448161
Price	\$154,900
Bedrooms	1
Bathrooms	1.00
Full Baths	1
Square Footage	621



Acres	0.00
Year Built	1968
Type	Condo / Townhouse
Sub-Type	Lowrise Apartment
Style	Single Level Apartment
Status	Active

Community Information

Address	101 10555 83 Avenue
Area	Edmonton
Subdivision	Strathcona
City	Edmonton
County	ALBERTA
Province	AB
Postal Code	T6E 2E1

Amenities

Amenities	Off Street Parking, Detectors Smoke
Parking Spaces	1
Parking	Stall

Interior

Appliances	Dishwasher-Built-In, Dryer, Microwave Hood Fan, Refrigerator, Stove-Electric, Washer, Window Coverings
Heating	Hot Water, Natural Gas
# of Stories	3
Stories	1
Has Basement	Yes
Basement	None, No Basement

Exterior

Exterior	Wood, Brick, Stucco
Exterior Features	Public Transportation, Schools, Shopping Nearby
Roof	Tar & Gravel
Construction	Wood, Brick, Stucco
Foundation	Concrete Perimeter

Additional Information

Date Listed	July 16th, 2025
-------------	-----------------

Days on Market	6
Zoning	Zone 15
Condo Fee	\$355

DATA IS DEEMED RELIABLE BUT IS NOT GUARANTEED ACCURATE BY THE REALTORS® ASSOCIATION OF EDMONTON. COPYRIGHT 2025 BY THE REALTORS® ASSOCIATION OF EDMONTON. ALL RIGHTS RESERVED. Trademarks are owned or controlled by the Canadian Real Estate Association (CREA) and identify real estate professionals who are members of CREA (REALTOR®, REALTORS®) and/or the quality of services they provide (MLS®, Multiple Listing Service®)

Listing information last updated on July 22nd, 2025 at 9:48am MDT