

## \$399,900 - 4307 Terwillegar Link Link, Edmonton

MLS® #E4447735

**\$399,900**

3 Bedroom, 3.50 Bathroom, 1,352 sqft

Single Family on 0.00 Acres

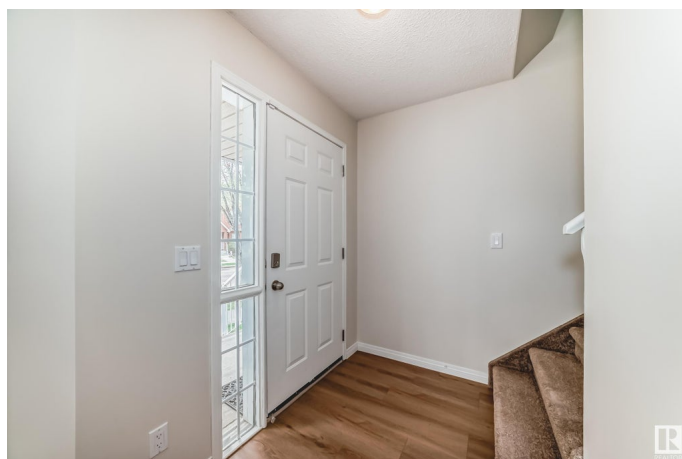
Terwillegar Towne, Edmonton, AB

No condo fee end unit Townhome in Terwillegar Towne! Absolutely great value-ideal as a starter home or investment property. New luxury vinyl plank flooring and fresh paint ensure a move-in-ready experience. This spacious 3-bedroom plus den, 3.5-bath home features a bright main floor with a cozy gas fireplace, kitchen with raised eating bar and dedicated hoodfan. Upstairs you'll find three comfortable bedrooms, including a huge primary suite with full ensuite bath. The fully finished basement adds versatility with a large rec room, an additional full bathroom, and a den that can function as a fourth bedroom or home office. A major highlight is the double detached garage with insulated walls, heater, and a dedicated sub-panel, making it perfect for a workshop or future EV charging setup. Newly improved back and side yard with a huge deck guarantee enjoyable outdoor living for the rest of the summer!

Built in 2002

### Essential Information

MLS® #	E4447735
Price	\$399,900
Bedrooms	3
Bathrooms	3.50



Full Baths	3
Half Baths	1
Square Footage	1,352
Acres	0.00
Year Built	2002
Type	Single Family
Sub-Type	Residential Attached
Style	2 Storey
Status	Active

### Community Information

Address	4307 Terwillegar Link <a href="#">Link</a>
Area	Edmonton
Subdivision	Terwillegar Towne
City	Edmonton
County	ALBERTA
Province	AB
Postal Code	T6R 3H6

### Amenities

Amenities	Carbon Monoxide Detectors, Deck, Detectors Smoke, Hot Water Natural Gas, Vaulted Ceiling
Parking	Double Garage Detached

### Interior

Interior Features	ensuite bathroom
Appliances	Dishwasher-Built-In, Dryer, Garage Control, Garage Opener, Hood Fan, Refrigerator, Storage Shed, Stove-Electric, Washer, Garage Heater
Heating	Forced Air-1, Natural Gas
Fireplace	Yes
Fireplaces	Corner, Glass Door, Tile Surround
Stories	3
Has Basement	Yes
Basement	Full, Finished

### Exterior

Exterior	Wood, Brick, Vinyl
Exterior Features	Fenced, Landscaped, Park/Reserve, Playground Nearby, Public Transportation, Schools, Shopping Nearby

Roof	Asphalt Shingles
Construction	Wood, Brick, Vinyl
Foundation	Concrete Perimeter

**Additional Information**

Date Listed	July 14th, 2025
Days on Market	13
Zoning	Zone 14
HOA Fees	138
HOA Fees Freq.	Annually

DATA IS DEEMED RELIABLE BUT IS NOT GUARANTEED ACCURATE BY THE REALTORS® ASSOCIATION OF EDMONTON. COPYRIGHT 2025 BY THE REALTORS® ASSOCIATION OF EDMONTON. ALL RIGHTS RESERVED.Trademarks are owned or controlled by the Canadian Real Estate Association (CREA) and identify real estate professionals who are members of CREA (REALTOR®, REALTORS®) and/or the quality of services they provide (MLS®, Multiple Listing Service®)

Listing information last updated on July 27th, 2025 at 1:47am MDT