

## **\$469,900 - 14767 140 Street, Edmonton**

MLS® #E4447083

**\$469,900**

4 Bedroom, 3.50 Bathroom, 1,341 sqft

Single Family on 0.00 Acres

Cumberland, Edmonton, AB

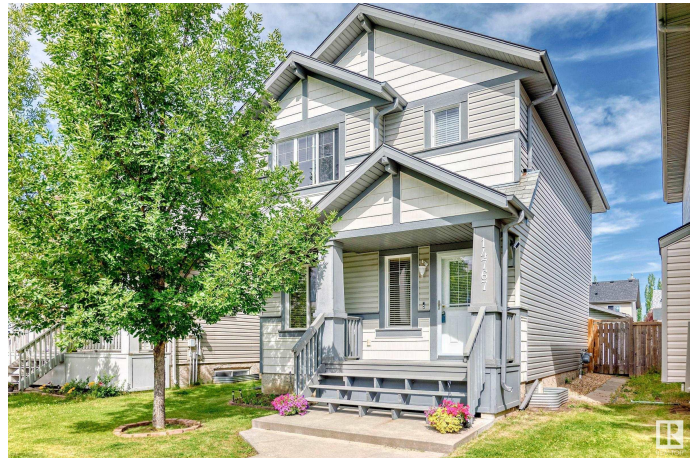
Welcome to this STUNNING 2 storey home situated in the desirable community of Cumberland! Features 1341 sqft, features total of 4 bedrooms/3.5 bathrooms/living room/family room & a double garage. Main floor offers large living room w bright windows, cozy fireplace, fresh painting & nice hardwood floorings throughout, adjacent to a good-sized dining area. Spacious kitchen offers modern cabinetries/raised centre kitchen island/double sink w bright windows overlooking to deck/prof landscaped & fenced yard, your private oasis for relaxation & entertainment. Convenient main floor 1/2 bath. Upper level offers 3 generous bedrooms all w laminate floorings. Master bedroom has walk-in closet & a 4pc en-suite bathroom. Another 4pc bathroom for the 2nd & 3rd bedrm. BASEMENT c/w 4th bedroom/family rm/3 pc bathroom/laundry & utility rm. Newer SS fridge/washer & dryer. Carpet free home! Only steps to school/playground/public trans/school/shopping & all amenities. Perfect for live in or investment! Just move-in & enjoy!

Built in 2007

### **Essential Information**

MLS® # E4447083

Price \$469,900



Bedrooms	4
Bathrooms	3.50
Full Baths	3
Half Baths	1
Square Footage	1,341
Acres	0.00
Year Built	2007
Type	Single Family
Sub-Type	Detached Single Family
Style	2 Storey
Status	Active

### Community Information

Address	14767 140 Street
Area	Edmonton
Subdivision	Cumberland
City	Edmonton
County	ALBERTA
Province	AB
Postal Code	T6V 0A4

### Amenities

Amenities	Deck, Front Porch
Parking Spaces	4
Parking	Double Garage Detached

### Interior

Interior Features	ensuite bathroom
Appliances	Dishwasher-Built-In, Dryer, Garage Control, Garage Opener, Hood Fan, Refrigerator, Storage Shed, Stove-Electric, Washer, Curtains and Blinds
Heating	Forced Air-1, Natural Gas
Fireplace	Yes
Fireplaces	Mantel
Stories	3
Has Basement	Yes
Basement	Full, Finished

### Exterior

Exterior	Wood, Vinyl
----------	-------------

Exterior Features	Back Lane, Fenced, Landscaped, Public Transportation, Schools, Shopping Nearby
Roof	Asphalt Shingles
Construction	Wood, Vinyl
Foundation	Concrete Perimeter

**School Information**

Elementary	Hilwie Hamdon School
Middle	St John Thompson

**Additional Information**

Date Listed	July 10th, 2025
Days on Market	1
Zoning	Zone 27

DATA IS DEEMED RELIABLE BUT IS NOT GUARANTEED ACCURATE BY THE REALTORS® ASSOCIATION OF EDMONTON. COPYRIGHT 2025 BY THE REALTORS® ASSOCIATION OF EDMONTON. ALL RIGHTS RESERVED.Trademarks are owned or controlled by the Canadian Real Estate Association (CREA) and identify real estate professionals who are members of CREA (REALTOR®, REALTORS®) and/or the quality of services they provide (MLS®, Multiple Listing Service®)

Listing information last updated on July 11th, 2025 at 3:17am MDT