

\$137,000 - 219 2323 119 Street, Edmonton

MLS® #E4446922

\$137,000

2 Bedroom, 1.00 Bathroom, 839 sqft

Condo / Townhouse on 0.00 Acres

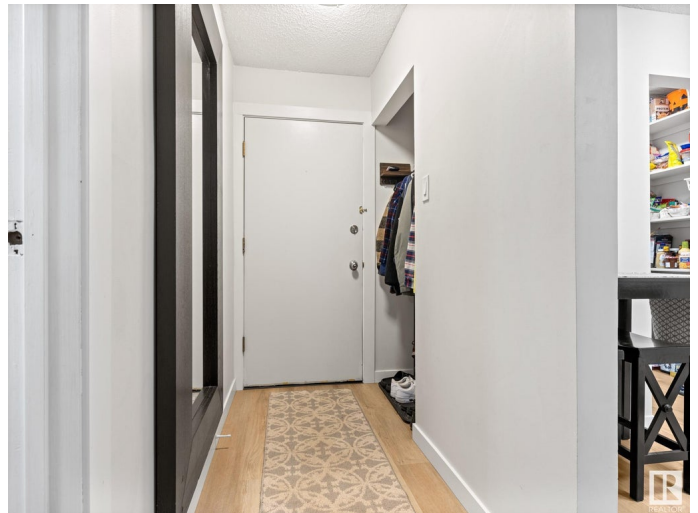
Blue Quill, Edmonton, AB

~ CUTE 2 BEDROOM, 1 BATH CONDO ~
LOCATED in the AMAZING COMMUNITY of
BLUE QUILL ~ SECOND FLOOR UNIT ~
Check out this amazing 2 bedroom unit in
FEATHERSTONE VILLAGE ~ IN-SUITE SIDE
BY SIDE WASHER & DRYER ~ Newer paint
and flooring ~ LARGE BALCONY with
STORAGE ROOM ~ PARKING STALL close
to building with a plug in for your vehicle ~
Very well kept unit that is in move in ready
condition ~ Located close to Whitemud Drive,
Anthony Henday, Shopping and Public
Transportation ~ Perfect for students, retirees
or couples ~ Hurry before this one is gone !!!

Built in 1977

Essential Information

MLS® #	E4446922
Price	\$137,000
Bedrooms	2
Bathrooms	1.00
Full Baths	1
Square Footage	839
Acres	0.00
Year Built	1977
Type	Condo / Townhouse
Sub-Type	Lowrise Apartment
Style	Single Level Apartment



Status Active

Community Information

Address 219 2323 119 Street
Area Edmonton
Subdivision Blue Quill
City Edmonton
County ALBERTA
Province AB
Postal Code T6J 4E2

Amenities

Amenities Detectors Smoke, Intercom, No Smoking Home, Parking-Plug-Ins, Parking-Visitor, Security Door, Television Connection
Parking Stall

Interior

Appliances Dishwasher-Built-In, Dryer, Refrigerator, Stove-Electric, Washer, Window Coverings
Heating Baseboard, Natural Gas
of Stories 3
Stories 1
Has Basement Yes
Basement None, No Basement

Exterior

Exterior Wood
Exterior Features Airport Nearby, Corner Lot, Flat Site, Golf Nearby, Landscaped, No Back Lane, No Through Road, Not Fenced, Playground Nearby, Public Swimming Pool, Public Transportation, Schools, Shopping Nearby
Roof Asphalt Shingles
Construction Wood
Foundation Concrete Perimeter

Additional Information

Date Listed July 10th, 2025
Days on Market 13
Zoning Zone 16
Condo Fee \$566

DATA IS DEEMED RELIABLE BUT IS NOT GUARANTEED ACCURATE BY THE REALTORS® ASSOCIATION OF

EDMONTON. COPYRIGHT 2025 BY THE REALTORS® ASSOCIATION OF EDMONTON. ALL RIGHTS RESERVED.Trademarks are owned or controlled by the Canadian Real Estate Association (CREA) and identify real estate professionals who are members of CREA (REALTOR®, REALTORS®) and/or the quality of services they provide (MLS®, Multiple Listing Service®)

Listing information last updated on July 22nd, 2025 at 9:47pm MDT