

## \$615,900 - 17 Everwood Close, St. Albert

MLS® #E4446899

**\$615,900**

4 Bedroom, 3.00 Bathroom, 1,389 sqft

Single Family on 0.00 Acres

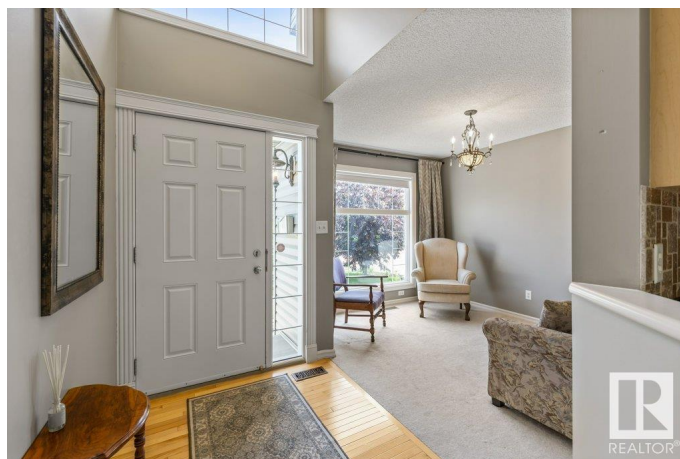
Erin Ridge, St. Albert, AB

Beautiful 1,388 sq ft bungalow with double attached garage, backing the walking path in the heart of Erin Ridge. This open concept home features a cozy den, spacious kitchen with granite countertops, SS appliances, corner pantry, and ample cabinetry. The living room offers a gas fireplace and flows into the dining area with access to a composite deck and stunning backyard. Main floor includes laundry, A/C, a generous primary bedroom with walk-in closet and 4-piece ensuite, a second bedroom, and another full 4-piece bath. Downstairs offers a large rec room, two additional spacious bedrooms, and a third 4-piece bath. This home backs onto St. Albert's scenic trail system, and is walking distance to schools, shopping, and more. This home won't last!

Built in 2005

### Essential Information

MLS® #	E4446899
Price	\$615,900
Bedrooms	4
Bathrooms	3.00
Full Baths	3
Square Footage	1,389
Acres	0.00
Year Built	2005



Type	Single Family
Sub-Type	Detached Single Family
Style	Bungalow
Status	Active

### Community Information

Address	17 Everwood Close
Area	St. Albert
Subdivision	Erin Ridge
City	St. Albert
County	ALBERTA
Province	AB
Postal Code	T8N 7H1

### Amenities

Amenities	Air Conditioner, Deck, Skylight, Vaulted Ceiling
Parking	Double Garage Attached

### Interior

Interior Features	ensuite bathroom
Appliances	Air Conditioning-Central, Dishwasher-Built-In, Hood Fan, Refrigerator, Stove-Electric, Washer, Dryer-Two
Heating	Forced Air-1, Natural Gas
Fireplace	Yes
Fireplaces	Corner, Mantel
Stories	2
Has Basement	Yes
Basement	Full, Finished

### Exterior

Exterior	Wood, Vinyl
Exterior Features	Backs Onto Park/Trees, Fenced, Landscaped, Playground Nearby, Public Transportation, Schools, Shopping Nearby, See Remarks
Roof	Asphalt Shingles
Construction	Wood, Vinyl
Foundation	Concrete Perimeter

### Additional Information

Date Listed	July 10th, 2025
-------------	-----------------

Days on Market 8

Zoning Zone 24

DATA IS DEEMED RELIABLE BUT IS NOT GUARANTEED ACCURATE BY THE REALTORS® ASSOCIATION OF EDMONTON. COPYRIGHT 2025 BY THE REALTORS® ASSOCIATION OF EDMONTON. ALL RIGHTS RESERVED. Trademarks are owned or controlled by the Canadian Real Estate Association (CREA) and identify real estate professionals who are members of CREA (REALTOR®, REALTORS®) and/or the quality of services they provide (MLS®, Multiple Listing Service®)

Listing information last updated on July 18th, 2025 at 7:32am MDT