

\$434,900 - 26 Jensen Gate, St. Albert

MLS® #E4446426

\$434,900

3 Bedroom, 2.50 Bathroom, 1,507 sqft
Single Family on 0.00 Acres

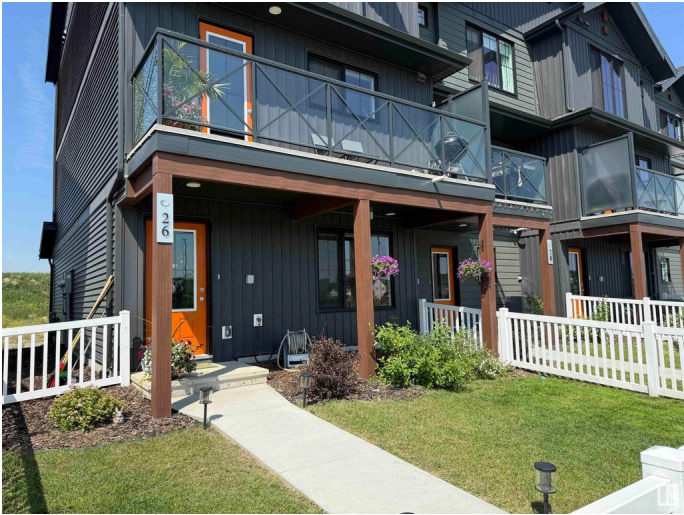
Jensen Lakes, St. Albert, AB

Wake up with the morning sun on your east-facing deck, coffee in hand, overlooking your beautifully fenced front yard. This stunning end-unit is a Residential Townhome (it is NOT a Condo). Located in sought-after Jensen Lakes this beautiful property offers not just a home, but a lifestyle—with private lake access, sandy beaches, skating, and year-round community events. With no condo fees, a double attached garage plus a huge rear parking pad, convenience is key. Step inside to and you will find a spacious foyer, main floor guest bedroom, and 2-piece bath. The heart of the home is the gorgeous open-concept second level with a bright living room, large island kitchen with stainless steel appliances, and generous dining space. Upstairs, enjoy the luxury of two primary suites, each with walk-in closets and private ensuites, plus the ease of upper-floor laundry. Walk to schools, shops, and restaurants—this is vibrant St. Albert living at its best.

Built in 2022

Essential Information

MLS® #	E4446426
Price	\$434,900
Bedrooms	3
Bathrooms	2.50



Full Baths	2
Half Baths	1
Square Footage	1,507
Acres	0.00
Year Built	2022
Type	Single Family
Sub-Type	Residential Attached
Style	2 Storey
Status	Active

Community Information

Address	26 Jensen Gate
Area	St. Albert
Subdivision	Jensen Lakes
City	St. Albert
County	ALBERTA
Province	AB
Postal Code	T8N 7Y5

Amenities

Amenities	Deck
Parking	Double Garage Attached

Interior

Interior Features	ensuite bathroom
Appliances	Dishwasher-Built-In, Dryer, Garage Opener, Microwave Hood Fan, Refrigerator, Stove-Electric, Washer, Window Coverings
Heating	Forced Air-1, Natural Gas
Stories	3
Has Basement	Yes
Basement	None, No Basement

Exterior

Exterior	Wood, Vinyl
Exterior Features	Beach Access, Fenced, Flat Site, Golf Nearby, Landscaped, Low Maintenance Landscape, Playground Nearby, Public Transportation, Shopping Nearby, See Remarks, Private Park Access
Roof	Asphalt Shingles
Construction	Wood, Vinyl

Foundation Slab

Additional Information

Date Listed July 8th, 2025
Zoning Zone 24
HOA Fees 525
HOA Fees Freq. Annually

DATA IS DEEMED RELIABLE BUT IS NOT GUARANTEED ACCURATE BY THE REALTORS® ASSOCIATION OF EDMONTON. COPYRIGHT 2025 BY THE REALTORS® ASSOCIATION OF EDMONTON. ALL RIGHTS RESERVED.Trademarks are owned or controlled by the Canadian Real Estate Association (CREA) and identify real estate professionals who are members of CREA (REALTOR®, REALTORS®) and/or the quality of services they provide (MLS®, Multiple Listing Service®)
Listing information last updated on July 8th, 2025 at 10:02am MDT