

## \$419,900 - 7161 Cardinal Way, Edmonton

MLS® #E4445689

**\$419,900**

3 Bedroom, 2.50 Bathroom, 1,547 sqft

Single Family on 0.00 Acres

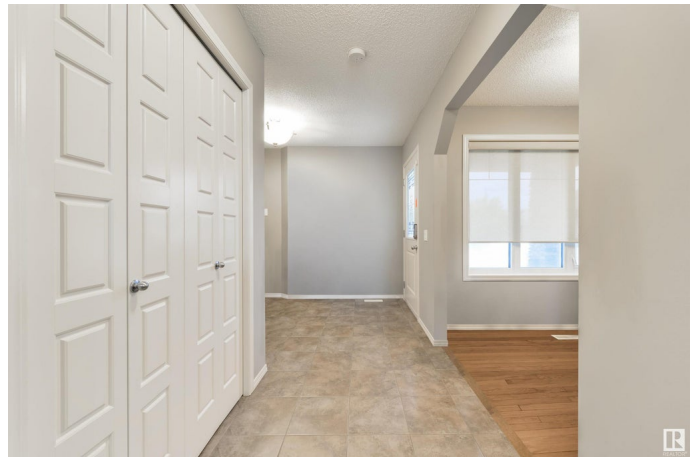
Chappelle Area, Edmonton, AB

Come home to this beautiful duplex (NO CONDO FEES) in the sought-after neighbourhood of Chappelle! - This well-maintained home is over 1500 sq ft and features 3 spacious bedrooms, 2.5 bathrooms, a main floor den and UPSTAIRS LAUNDRY. The open concept kitchen features espresso cabinetry, stainless steel appliances & Granite Countertops. Upstairs you'll find a king-sized primary bedroom with a 4 PC Ensuite and walk-in closet plus two more generous sized bedrooms with access to another 4 PC Bathroom. The basement is ready for your finishing touches!

Built in 2015

### Essential Information

MLS® #	E4445689
Price	\$419,900
Bedrooms	3
Bathrooms	2.50
Full Baths	2
Half Baths	1
Square Footage	1,547
Acres	0.00
Year Built	2015
Type	Single Family
Sub-Type	Half Duplex



Style	2 Storey
Status	Active

### Community Information

Address	7161 Cardinal Way
Area	Edmonton
Subdivision	Chappelle Area
City	Edmonton
County	ALBERTA
Province	AB
Postal Code	T6W 2Y3

### Amenities

Amenities	Deck
Parking	Single Garage Attached

### Interior

Interior Features	ensuite bathroom
Appliances	Dishwasher-Built-In, Dryer, Microwave Hood Fan, Refrigerator, Stove-Electric, Washer
Heating	Forced Air-1, Natural Gas
Stories	2
Has Basement	Yes
Basement	Full, Unfinished

### Exterior

Exterior	Wood, Vinyl
Exterior Features	Landscaped, Playground Nearby, Schools, Shopping Nearby
Roof	Asphalt Shingles
Construction	Wood, Vinyl
Foundation	Concrete Perimeter

### Additional Information

Date Listed	July 3rd, 2025
Days on Market	4
Zoning	Zone 55
HOA Fees	100
HOA Fees Freq.	Annually

DATA IS DEEMED RELIABLE BUT IS NOT GUARANTEED ACCURATE BY THE REALTORS® ASSOCIATION OF

EDMONTON. COPYRIGHT 2025 BY THE REALTORS® ASSOCIATION OF EDMONTON. ALL RIGHTS RESERVED.Trademarks are owned or controlled by the Canadian Real Estate Association (CREA) and identify real estate professionals who are members of CREA (REALTOR®, REALTORS®) and/or the quality of services they provide (MLS®, Multiple Listing Service®)

Listing information last updated on July 7th, 2025 at 5:47am MDT