

\$170,000 - 102 142 Selkirk Place, Leduc

MLS® #E4445586

\$170,000

2 Bedroom, 1.00 Bathroom, 837 sqft

Condo / Townhouse on 0.00 Acres

Suntree (Leduc), Leduc, AB

Great property for a first time home buyer or rental. Very low condo fees \$274 per month. This well cared for home has everything you need, 2 spacious bedrooms, open Kitchen-living room. Parking in front. Full size washer and dryer. Newer washer/dryer, and flooring. 2 Storage areas, Very well kept one owner home. Non smoking, non pet home. Close to parks and schools!

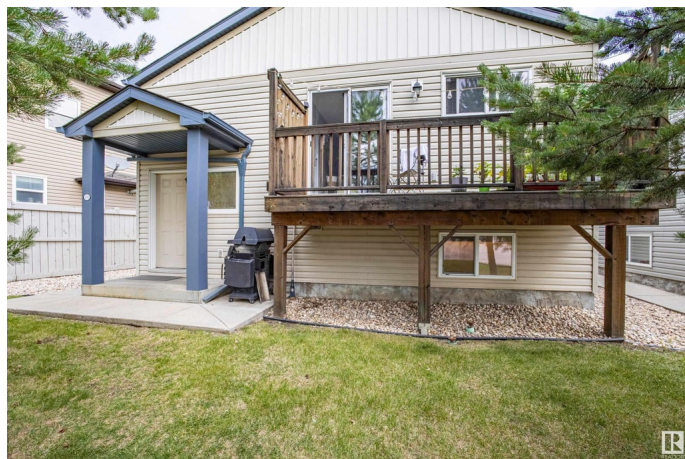
Built in 2012

Essential Information

MLS® #	E4445586
Price	\$170,000
Bedrooms	2
Bathrooms	1.00
Full Baths	1
Square Footage	837
Acres	0.00
Year Built	2012
Type	Condo / Townhouse
Sub-Type	Half Duplex
Style	Bi-Level
Status	Active

Community Information

Address	102 142 Selkirk Place
Area	Leduc



Subdivision	Suntree (Leduc)
City	Leduc
County	ALBERTA
Province	AB
Postal Code	T9E 0M9

Amenities

Amenities	Ceiling 9 ft., No Animal Home, No Smoking Home
Parking	Parking Pad Cement/Paved

Interior

Appliances	Dishwasher-Built-In, Dryer, Microwave Hood Fan, Refrigerator, Stove-Electric, Washer, Window Coverings
Heating	Forced Air-1, Natural Gas
Stories	1
Has Basement	Yes
Basement	See Remarks, Finished

Exterior

Exterior	Wood, Vinyl
Exterior Features	Airport Nearby, Golf Nearby, Playground Nearby, Schools, Shopping Nearby
Roof	Asphalt Shingles
Construction	Wood, Vinyl
Foundation	Concrete Perimeter

Additional Information

Date Listed	July 3rd, 2025
Days on Market	4
Zoning	Zone 81
Condo Fee	\$274

DATA IS DEEMED RELIABLE BUT IS NOT GUARANTEED ACCURATE BY THE REALTORS® ASSOCIATION OF EDMONTON. COPYRIGHT 2025 BY THE REALTORS® ASSOCIATION OF EDMONTON. ALL RIGHTS RESERVED.Trademarks are owned or controlled by the Canadian Real Estate Association (CREA) and identify real estate professionals who are members of CREA (REALTOR®, REALTORS®) and/or the quality of services they provide (MLS®, Multiple Listing Service®)

Listing information last updated on July 7th, 2025 at 10:32am MDT