

\$619,000 - 1228 164 Street, Edmonton

MLS® #E4445462

\$619,000

3 Bedroom, 2.50 Bathroom, 1,864 sqft

Single Family on 0.00 Acres

Glenridding Heights, Edmonton, AB

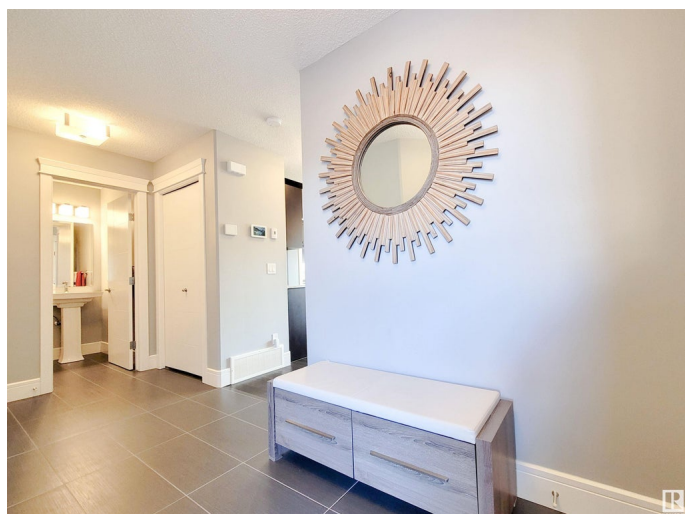
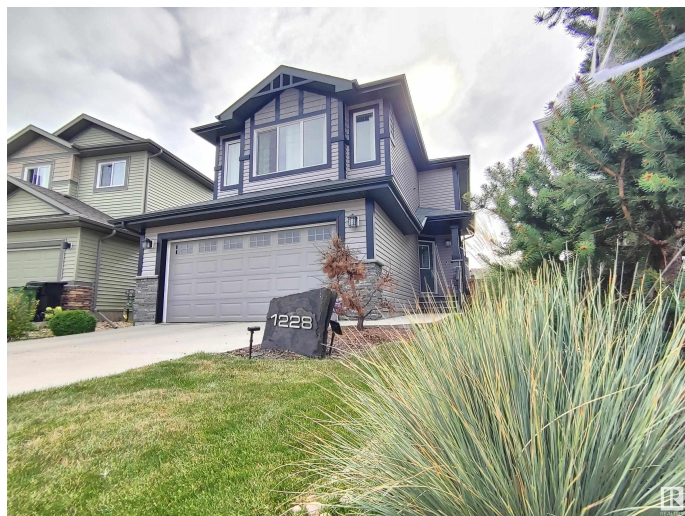
Welcome to this beautiful original owner home, nestled in a quiet cul-de-sac of a family-friendly neighbourhood. With an attached garage and an open-concept layout, this home blends comfort with modern style. Upstairs, you'll find three spacious bedrooms, a large bonus room, and a convenient second-floor laundry room. With 2.5 bathrooms, including a well-appointed ensuite in the primary bedroom, this home offers both comfort and convenience. Step inside to discover gleaming hardwood floors and a bright, spacious interior that flows seamlessly from the living room to the kitchen and dining area. Step outside to enjoy your south-facing pie-shaped backyard—a sun-soaked retreat featuring a low-maintenance, two-level composite deck (11.5 x 9ft upper + 20 x 12ft lower) that's perfect for BBQs, relaxing, or hosting friends. With no rear neighbours and backing onto a quiet alleyway, don't miss your chance to own this move-in-ready home that offers privacy, a peaceful vibe, space, style, and a prime location.

Built in 2015

Essential Information

MLS® # E4445462

Price \$619,000



Bedrooms	3
Bathrooms	2.50
Full Baths	2
Half Baths	1
Square Footage	1,864
Acres	0.00
Year Built	2015
Type	Single Family
Sub-Type	Detached Single Family
Style	2 Storey
Status	Active

Community Information

Address	1228 164 Street
Area	Edmonton
Subdivision	Glenridding Heights
City	Edmonton
County	ALBERTA
Province	AB
Postal Code	T6W 3K4

Amenities

Amenities	No Smoking Home
Parking Spaces	4
Parking	Double Garage Attached

Interior

Interior Features	ensuite bathroom
Appliances	Dishwasher-Built-In, Dryer, Garage Control, Garage Opener, Hood Fan, Refrigerator, Stove-Gas, Washer, Window Coverings
Heating	Forced Air-1, Natural Gas
Fireplace	Yes
Fireplaces	Glass Door
Stories	2
Has Basement	Yes
Basement	Full, Unfinished

Exterior

Exterior	Wood, Vinyl
----------	-------------

Exterior Features	Cul-De-Sac, Fenced, Landscaped, Public Transportation, Shopping Nearby
Roof	Asphalt Shingles
Construction	Wood, Vinyl
Foundation	Concrete Perimeter

Additional Information

Date Listed	July 3rd, 2025
Days on Market	3
Zoning	Zone 56

DATA IS DEEMED RELIABLE BUT IS NOT GUARANTEED ACCURATE BY THE REALTORS® ASSOCIATION OF EDMONTON. COPYRIGHT 2025 BY THE REALTORS® ASSOCIATION OF EDMONTON. ALL RIGHTS RESERVED.Trademarks are owned or controlled by the Canadian Real Estate Association (CREA) and identify real estate professionals who are members of CREA (REALTOR®, REALTORS®) and/or the quality of services they provide (MLS®, Multiple Listing Service®)

Listing information last updated on July 6th, 2025 at 3:47pm MDT