

\$599,000 - 19636 26 Avenue, Edmonton

MLS® #E4445087

\$599,000

4 Bedroom, 3.50 Bathroom, 2,074 sqft

Single Family on 0.00 Acres

The Uplands, Edmonton, AB

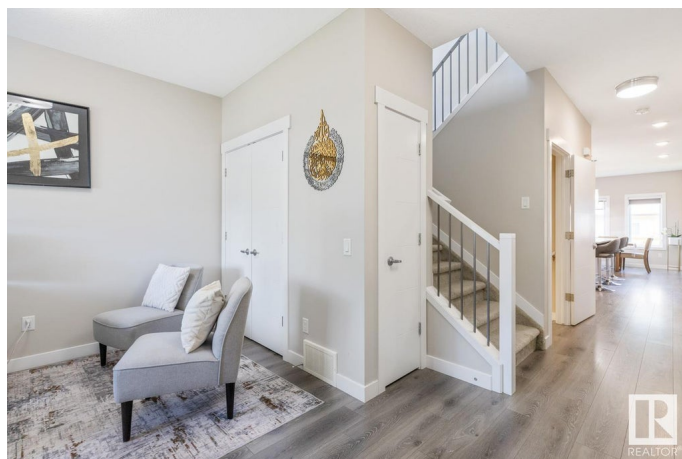
Welcome to this stunning Daytona home in the sought-after community of The Uplands! This beautifully designed 4-bedroom, 3.5-bath residence has been meticulously cared for, with pride of ownership evident from the moment you enter. The main floor offers a bright, open-concept layout, perfect for both everyday living and entertaining. The chef-inspired kitchen features upgraded SS appliances, quartz countertops, a large island and a spacious walk-in pantry. Upstairs, youâ€™ll find a bright, versatile bonus room. The primary bedroom includes a walk-in closet and a luxurious 5-piece ensuite with double vanity, soaker tub, and separate shower. Two additional generously sized bedrooms and a full laundry room complete the upper level. The fully finished basement with SIDE SEPARATE ENTRANCE features a cozy living area with fireplace, full kitchen, bedroom, and bathroomâ€”ideal as a mother-in-law suite or entertainment space. Walking distance to playground, public transit and future amenities! WELCOME HOME!

Built in 2018

Essential Information

MLS® # E4445087

Price \$599,000



Bedrooms	4
Bathrooms	3.50
Full Baths	3
Half Baths	1
Square Footage	2,074
Acres	0.00
Year Built	2018
Type	Single Family
Sub-Type	Detached Single Family
Style	2 Storey
Status	Active

Community Information

Address	19636 26 Avenue
Area	Edmonton
Subdivision	The Uplands
City	Edmonton
County	ALBERTA
Province	AB
Postal Code	T6M 0X4

Amenities

Amenities	Ceiling 9 ft., Deck, No Animal Home, No Smoking Home, Secured Parking
Parking	Double Garage Attached

Interior

Interior Features	ensuite bathroom
Appliances	Dryer, Garage Opener, Hood Fan, Washer, Window Coverings, Refrigerators-Two, Stoves-Two, Dishwasher-Two, Garage Heater
Heating	Forced Air-1, Natural Gas
Stories	3
Has Suite	Yes
Has Basement	Yes
Basement	Full, Finished

Exterior

Exterior	Wood, Vinyl
Exterior Features	Fenced, Landscaped, Playground Nearby, Public Transportation,

	Schools, Shopping Nearby
Roof	Asphalt Shingles
Construction	Wood, Vinyl
Foundation	Concrete Perimeter

Additional Information

Date Listed	June 30th, 2025
Days on Market	56
Zoning	Zone 57

DATA IS DEEMED RELIABLE BUT IS NOT GUARANTEED ACCURATE BY THE REALTORS® ASSOCIATION OF EDMONTON. COPYRIGHT 2025 BY THE REALTORS® ASSOCIATION OF EDMONTON. ALL RIGHTS RESERVED. Trademarks are owned or controlled by the Canadian Real Estate Association (CREA) and identify real estate professionals who are members of CREA (REALTOR®, REALTORS®) and/or the quality of services they provide (MLS®, Multiple Listing Service®)

Listing information last updated on August 25th, 2025 at 8:32am MDT