

\$370,000 - 5 4137 76 Street, Edmonton

MLS® #E4444107

\$370,000

3 Bedroom, 2.50 Bathroom, 1,535 sqft

Condo / Townhouse on 0.00 Acres

Michaels Park, Edmonton, AB

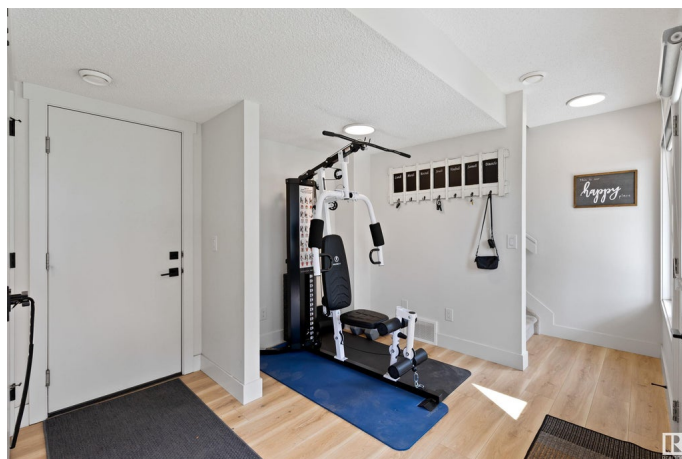
Welcome to modern urban living redefined in Michael's Park! This stunning 2021-built, 3-story townhome boasts 1532 sq ft of meticulously designed, low-maintenance space. Step inside to a bright, open atmosphere with Nordic-inspired interior finishes and LVP flooring. The heart of the home is its gourmet kitchen with quartz countertops and stainless steel appliances. A double attached garage is located on the main level along with a spacious entrance. Upstairs, discover three bedrooms, including the master bedroom with ensuite and the laundry area. This home has 2.5 bathrooms, featuring tile flooring. Enjoy custom window coverings and a private balcony with a barbecue gasline. Michael's Park Landing offers a stable, majority owner-occupied community. Monthly condo fees cover exterior building insurance, landscaping, lawncare and snow removal, for a carefree lifestyle. Excellent access to parks, schools, shopping, and major transportation routes like Whitemud and Anthony Henday makes this an ideal location.

Built in 2021

Essential Information

MLS® # E4444107

Price \$370,000



Bedrooms	3
Bathrooms	2.50
Full Baths	2
Half Baths	1
Square Footage	1,535
Acres	0.00
Year Built	2021
Type	Condo / Townhouse
Sub-Type	Townhouse
Style	3 Storey
Status	Active

Community Information

Address	5 4137 76 Street
Area	Edmonton
Subdivision	Michaels Park
City	Edmonton
County	ALBERTA
Province	AB
Postal Code	T6K 6K8

Amenities

Amenities	No Animal Home, No Smoking Home, Parking-Visitor, Patio, Vinyl Windows, See Remarks, Infill Property
Parking	Double Garage Attached

Interior

Interior Features	ensuite bathroom
Appliances	Dishwasher-Built-In, Dryer, Garage Control, Garage Opener, Microwave Hood Fan, Refrigerator, Stove-Electric, Washer, Window Coverings
Heating	Forced Air-1, Natural Gas
Stories	3
Has Basement	Yes
Basement	None, No Basement

Exterior

Exterior	Wood, Vinyl
Exterior Features	Landscaped, Low Maintenance Landscape, No Through Road, Park/Reserve, Playground Nearby, Public Transportation, Schools,

	Shopping Nearby
Roof	Asphalt Shingles
Construction	Wood, Vinyl
Foundation	Concrete Perimeter

Additional Information

Date Listed	June 24th, 2025
Days on Market	14
Zoning	Zone 29
Condo Fee	\$312

DATA IS DEEMED RELIABLE BUT IS NOT GUARANTEED ACCURATE BY THE REALTORS® ASSOCIATION OF EDMONTON. COPYRIGHT 2025 BY THE REALTORS® ASSOCIATION OF EDMONTON. ALL RIGHTS RESERVED. Trademarks are owned or controlled by the Canadian Real Estate Association (CREA) and identify real estate professionals who are members of CREA (REALTOR®, REALTORS®) and/or the quality of services they provide (MLS®, Multiple Listing Service®)

Listing information last updated on July 8th, 2025 at 1:32pm MDT