

\$429,900 - 9527 178a Avenue, Edmonton

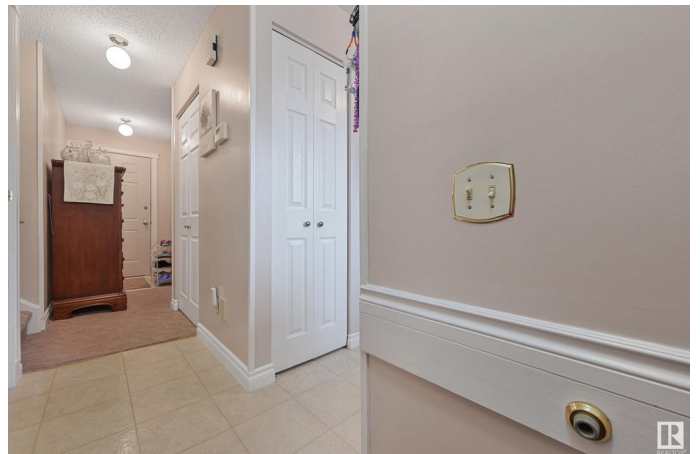
MLS® #E4442427

\$429,900

4 Bedroom, 2.50 Bathroom, 1,094 sqft
Single Family on 0.00 Acres

Lago Lindo, Edmonton, AB

Welcome to the beautiful community of Lago Lindo. This Custom-Built Executive 4-Level Split offers Elegance and Magnificent Living Spaces. Located in a quiet Cul-De-Sac with 1,092 SQFT above grade and 4 Bedrooms with 2.5 Bathrooms. This home is Immaculate! Upon entry you are greeted by Large Living space with its warm Open Floor Plan and is imbued with lots of Natural Light & with an expansive Dining Area. Followed by the Gorgeous Chef's Kitchen Boasting plenty of Cabinetry. Upstairs features 3 Large Bedrooms and a Full Bathroom. The Master is Large that can accommodate a King Size Bed and has a Half Bath Ensuite. It also has a Large Patio Door for a future Walk Out Deck. The Lower Level features a Large Living Room, Bar and is great for entertaining. 1 Bedroom and a 3 Piece Bathroom. Double Detached Garage. Large Backyard with your own Private Oasis and mature Trees and a Fire Pit. Upgrades include: Roof, Windows AC. Great location with many Neighbourhood Schools and direct access to parks and Lakes.



Built in 1983

Essential Information

MLS® #	E4442427
Price	\$429,900

Bedrooms	4
Bathrooms	2.50
Full Baths	2
Half Baths	1
Square Footage	1,094
Acres	0.00
Year Built	1983
Type	Single Family
Sub-Type	Detached Single Family
Style	4 Level Split
Status	Active

Community Information

Address	9527 178a Avenue
Area	Edmonton
Subdivision	Lago Lindo
City	Edmonton
County	ALBERTA
Province	AB
Postal Code	T5Z 2G8

Amenities

Amenities	Air Conditioner, Bar, Fire Pit, See Remarks
Parking	Double Garage Detached

Interior

Interior Features	ensuite bathroom
Appliances	Air Conditioning-Central, Dishwasher-Built-In, Dryer, Hood Fan, Refrigerator, Stove-Electric, Washer, See Remarks
Heating	Forced Air-1, Natural Gas
Stories	4
Has Basement	Yes
Basement	Full, Finished

Exterior

Exterior	Wood, Stucco
Exterior Features	Cul-De-Sac, Fruit Trees/Shrubs, Golf Nearby, Landscaped, No Back Lane, Playground Nearby, Public Transportation, Schools, Shopping Nearby

Roof	Asphalt Shingles
Construction	Wood, Stucco
Foundation	Concrete Perimeter

Additional Information

Date Listed	June 13th, 2025
Days on Market	2
Zoning	Zone 28

DATA IS DEEMED RELIABLE BUT IS NOT GUARANTEED ACCURATE BY THE REALTORS® ASSOCIATION OF EDMONTON. COPYRIGHT 2025 BY THE REALTORS® ASSOCIATION OF EDMONTON. ALL RIGHTS RESERVED.Trademarks are owned or controlled by the Canadian Real Estate Association (CREA) and identify real estate professionals who are members of CREA (REALTOR®, REALTORS®) and/or the quality of services they provide (MLS®, Multiple Listing Service®)

Listing information last updated on June 15th, 2025 at 9:47am MDT