

## \$449,900 - 2126 Maple Road, Edmonton

MLS® #E4441928

**\$449,900**

3 Bedroom, 2.50 Bathroom, 1,436 sqft

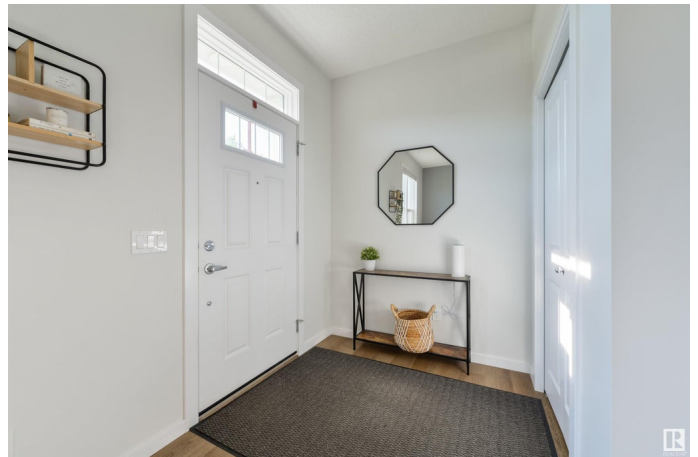
Single Family on 0.00 Acres

Maple Crest, Edmonton, AB

PERFECT FAMILY HOME in MAPLE CREST w/ 1436 sq.ft of developed living space, featuring 3 BEDS, 2.5 BATHS, a DETACHED DOUBLE GARAGE, a SEPARATE ENTRANCE for future basement suite development, & a FULLY FENCED BACKYARD. The main floor features a large kitchen w/ UPGRADED STAINLESS STEEL APPLIANCES + SOFT CLOSE CABINETS + a WALK-IN PANTRY + BREAKFAST NOOK, a COZY LIVING ROOM w/LARGE WINDOWS that let in plenty of natural light, a SPACIOUS DINING AREA, & a 2.5pc BATH. Upstairs you'll find the PRIMARY BEDROOM w/ WALK-IN CLOSET + 4pc ENSUITE, TWO SPARE ROOMS, a second 4pc BATH, & UPSTAIRS LAUNDRY w/ STORAGE SPACE. The basement is UNFINISHED w/ again, a SEPARATE ENTRANCE for future basement suite development. Located close to all the amenities you can think of including, but not limited to: RESTAURANTS, MOVIE THEATRES, CAFES, BANKS, GROCERY STORES, SCHOOLS, SHOPPING, PUBLIC TRANSIT, WALKING TRAILS, & THE MEADOWS COMMUNITY RECREATION CENTRE. Easy access to the WHITEMUD & ANTHONY HENDAY.

Built in 2020

### Essential Information



MLS® #	E4441928
Price	\$449,900
Bedrooms	3
Bathrooms	2.50
Full Baths	2
Half Baths	1
Square Footage	1,436
Acres	0.00
Year Built	2020
Type	Single Family
Sub-Type	Half Duplex
Style	2 Storey
Status	Active

### Community Information

Address	2126 Maple Road
Area	Edmonton
Subdivision	Maple Crest
City	Edmonton
County	ALBERTA
Province	AB
Postal Code	T6T 2L6

### Amenities

Amenities	On Street Parking, Deck, Detectors Smoke, No Smoking Home, HRV System, Natural Gas BBQ Hookup
Parking	Double Garage Detached

### Interior

Interior Features	ensuite bathroom
Appliances	Dishwasher-Built-In, Dryer, Microwave Hood Fan, Refrigerator, Stove-Electric, Washer, Window Coverings
Heating	Forced Air-1, Natural Gas
Stories	2
Has Basement	Yes
Basement	Full, Unfinished

### Exterior

Exterior	Wood, Vinyl
----------	-------------

Exterior Features	Back Lane, Fenced, Golf Nearby, Landscaped, Low Maintenance Landscape, Paved Lane, Playground Nearby, Public Transportation, Schools, Shopping Nearby, See Remarks
Roof	Asphalt Shingles
Construction	Wood, Vinyl
Foundation	Concrete Perimeter

**Additional Information**

Date Listed	June 12th, 2025
Days on Market	4
Zoning	Zone 30

DATA IS DEEMED RELIABLE BUT IS NOT GUARANTEED ACCURATE BY THE REALTORS® ASSOCIATION OF EDMONTON. COPYRIGHT 2025 BY THE REALTORS® ASSOCIATION OF EDMONTON. ALL RIGHTS RESERVED.Trademarks are owned or controlled by the Canadian Real Estate Association (CREA) and identify real estate professionals who are members of CREA (REALTOR®, REALTORS®) and/or the quality of services they provide (MLS®, Multiple Listing Service®)

Listing information last updated on June 15th, 2025 at 11:47pm MDT