

\$2,675 - 15815 30 Avenue, Edmonton

MLS® #E4441343

\$2,675

4 Bedroom, 3.00 Bathroom, 1,931 sqft

Rental on 0.00 Acres

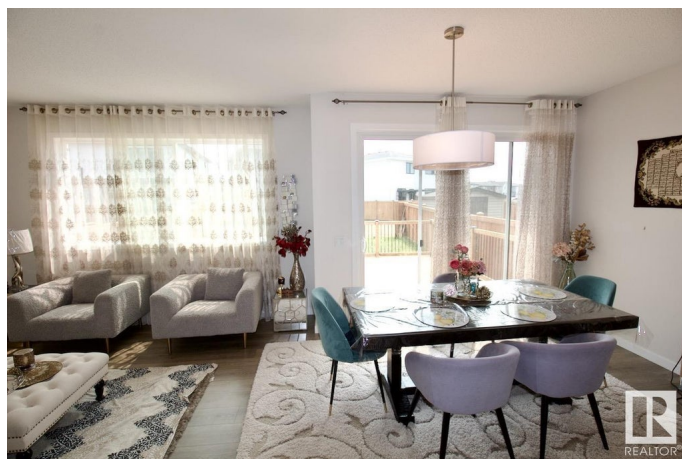
Glenridding Ravine, Edmonton, AB

Welcome Home! Spacious and family-friendly 4 Bedroom (3 up + 1 main) and 3 Full Bathroom home available for rent in the desirable community of Glenridding, Southwest Edmonton. Enjoy a double attached garage, a large fully fenced backyard, and an oversized deck perfect for entertaining or relaxing outdoors. This home offers a functional and open-concept main floor with a versatile den or 4th bedroom, full bath with tub, and a well-appointed kitchen featuring ample cabinetry, pantry, and counter space. The dining area leads to patio doors and the large deck. Upstairs you'll find a bright bonus room, convenient upper floor laundry, and three generous bedrooms including a spacious primary suite with walk-in closet and ensuite bath. The unfinished basement provides additional storage space. Located in a quiet and welcoming neighbourhood close to schools, parks, shopping, and major routes. Tenant pays all utilities.

Built in 2022

Essential Information

MLS® #	E4441343
Price	\$2,675
Bedrooms	4
Bathrooms	3.00



Full Baths	3
Square Footage	1,931
Acres	0.00
Year Built	2022
Type	Rental
Style	2 Storey
Status	Active

Community Information

Address	15815 30 Avenue
Area	Edmonton
Subdivision	Glenridding Ravine
City	Edmonton
County	ALBERTA
Province	AB
Postal Code	T6W 4X3

Amenities

Parking	Double Garage Attached
---------	------------------------

Interior

Appliances	Dishwasher-Built-In, Dryer, Garage Opener, Microwave Hood Fan, Oven-Built-In, Refrigerator, Stove-Electric, Washer, Other
------------	---

Additional Information

Date Listed	June 9th, 2025
Days on Market	7
Zoning	Zone 56

DATA IS DEEMED RELIABLE BUT IS NOT GUARANTEED ACCURATE BY THE REALTORS® ASSOCIATION OF EDMONTON. COPYRIGHT 2025 BY THE REALTORS® ASSOCIATION OF EDMONTON. ALL RIGHTS RESERVED. Trademarks are owned or controlled by the Canadian Real Estate Association (CREA) and identify real estate professionals who are members of CREA (REALTOR®, REALTORS®) and/or the quality of services they provide (MLS®, Multiple Listing Service®)

Listing information last updated on June 16th, 2025 at 12:17am MDT