

Courtesy Of Tom M Allison Of Real Broker

## \$485,000 - 21015 130 Avenue, Edmonton

MLS® #E4440449

**\$485,000**

3 Bedroom, 2.50 Bathroom, 1,651 sqft

Single Family on 0.00 Acres

Trumpeter Area, Edmonton, AB

Welcome to this stunning 1651 sq. ft. 2-storey home, thoughtfully designed for both style and function. Step inside to soaring 12-foot ceilings in the living room, paired with floor-to-ceiling windows that flood the space with natural light. The open-concept main floor offers a bright white kitchen with granite countertops, ample cabinetry, and a spacious dining area that overlooks the living room—perfect for entertaining. Upstairs you'll find three generously sized bedrooms, including a beautiful primary suite with a walk-in closet and a private 4-piece ensuite. A convenient upstairs laundry room, accessible directly from the primary bedroom, adds everyday ease. The unfinished basement offers endless potential with rare 12-foot ceilings, giving you the opportunity to create the ultimate rec room, home gym, or guest space. The back yard has a composite deck, is fully fenced, and has a double detached garage and central A/C. Located within walking distance shops, parks, daycares and more!

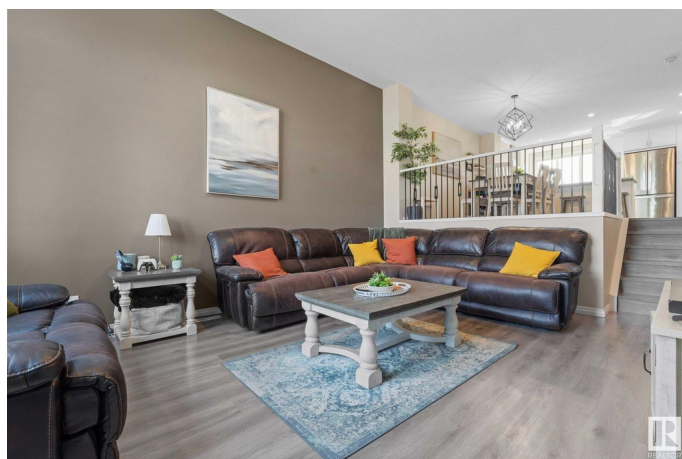
Built in 2021

### Essential Information

MLS® # E4440449

Price \$485,000

Bedrooms 3



Bathrooms	2.50
Full Baths	2
Half Baths	1
Square Footage	1,651
Acres	0.00
Year Built	2021
Type	Single Family
Sub-Type	Detached Single Family
Style	2 Storey
Status	Active

### Community Information

Address	21015 130 Avenue
Area	Edmonton
Subdivision	Trumpeter Area
City	Edmonton
County	ALBERTA
Province	AB
Postal Code	T5S 0N6

### Amenities

Amenities	Air Conditioner, See Remarks
Parking	Double Garage Detached

### Interior

Interior Features	ensuite bathroom
Appliances	Air Conditioning-Central, Dishwasher-Built-In, Dryer, Refrigerator, Stove-Electric, Washer, Window Coverings
Heating	Forced Air-1, Natural Gas
Stories	2
Has Basement	Yes
Basement	Full, Unfinished

### Exterior

Exterior	Wood, Stone, Vinyl
Exterior Features	Fenced, Flat Site, Golf Nearby, Schools, Shopping Nearby
Roof	Asphalt Shingles
Construction	Wood, Stone, Vinyl
Foundation	Concrete Perimeter

**Additional Information**

Date Listed            June 5th, 2025  
Days on Market      12  
Zoning                 Zone 59

DATA IS DEEMED RELIABLE BUT IS NOT GUARANTEED ACCURATE BY THE REALTORS® ASSOCIATION OF EDMONTON. COPYRIGHT 2025 BY THE REALTORS® ASSOCIATION OF EDMONTON. ALL RIGHTS RESERVED.Trademarks are owned or controlled by the Canadian Real Estate Association (CREA) and identify real estate professionals who are members of CREA (REALTOR®, REALTORS®) and/or the quality of services they provide (MLS®, Multiple Listing Service®)  
Listing information last updated on June 17th, 2025 at 6:32am MDT