

## \$327,900 - 11511 89 Street, Edmonton

MLS® #E4439881

**\$327,900**

3 Bedroom, 2.00 Bathroom, 750 sqft

Single Family on 0.00 Acres

Parkdale (Edmonton), Edmonton, AB

Don't miss your chance to own this turnkey gem in one of the city's most charming neighborhoods! Fully updated bungalow in the heart of Parkdale! This move-in ready home features 2 bedrooms up plus a 1-bedroom in-law suite. The main level offers a bright living room with hardwood floors, leading to an updated kitchen with cork floors and a cozy eating area. The spacious primary bedroom has garden doors opening to a beautiful yard, while a second bedroom and 4-piece bath complete the main floor. The in-law suite includes a stylish kitchen, family room, bedroom, and a 4-piece bath with soaker tub, plus laundry and utility room. Major upgrades: furnace, hot water tank, electrical panel, roof, siding, windows, insulation, and the list is ongoing. Enjoy a lovely landscaped yard, single-car garage, and extra lane parking. Ideally located close to parks, schools, and transit. Downtown is minutes away. This home blends character and modern convenience all in one.

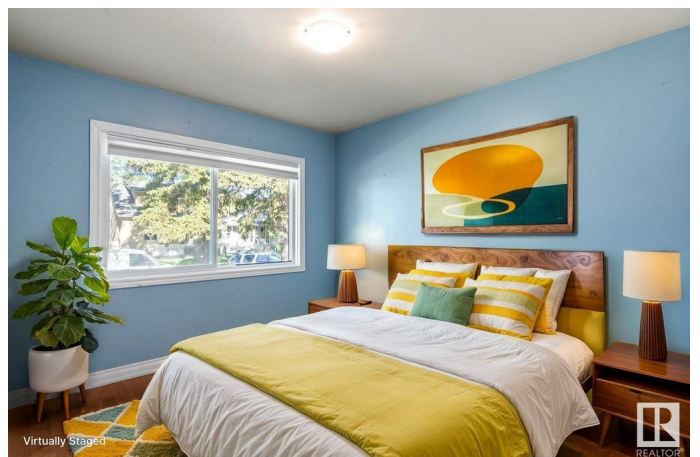
Built in 1952

### Essential Information

MLS® # E4439881

Price \$327,900

Bedrooms 3



Bathrooms	2.00
Full Baths	2
Square Footage	750
Acres	0.00
Year Built	1952
Type	Single Family
Sub-Type	Detached Single Family
Style	Bungalow
Status	Active

### Community Information

Address	11511 89 Street
Area	Edmonton
Subdivision	Parkdale (Edmonton)
City	Edmonton
County	ALBERTA
Province	AB
Postal Code	T5B 3V1

### Amenities

Amenities	Deck, Vinyl Windows, See Remarks
Parking Spaces	3
Parking	Single Garage Detached

### Interior

Appliances	Dryer, Storage Shed, Washer, Window Coverings, Refrigerators-Two, Stoves-Two, Dishwasher-Two, Microwave Hood Fan-Two
Heating	Forced Air-1, Natural Gas
Stories	2
Has Basement	Yes
Basement	Full, Finished

### Exterior

Exterior	Wood, Vinyl
Exterior Features	Back Lane, Fenced, Landscaped, Playground Nearby, Private Setting, Public Transportation, Schools, Shopping Nearby, Vegetable Garden, See Remarks
Roof	Asphalt Shingles
Construction	Wood, Vinyl

Foundation                      Concrete Perimeter

**Additional Information**

Date Listed                      June 1st, 2025

Days on Market                7

Zoning                            Zone 05

DATA IS DEEMED RELIABLE BUT IS NOT GUARANTEED ACCURATE BY THE REALTORS® ASSOCIATION OF EDMONTON. COPYRIGHT 2025 BY THE REALTORS® ASSOCIATION OF EDMONTON. ALL RIGHTS RESERVED.Trademarks are owned or controlled by the Canadian Real Estate Association (CREA) and identify real estate professionals who are members of CREA (REALTOR®, REALTORS®) and/or the quality of services they provide (MLS®, Multiple Listing Service®)

Listing information last updated on June 8th, 2025 at 3:17am MDT