

\$1,490,000 - 392 52304 Rge Road 233, Rural Strathcona County

MLS® #E4439563

\$1,490,000

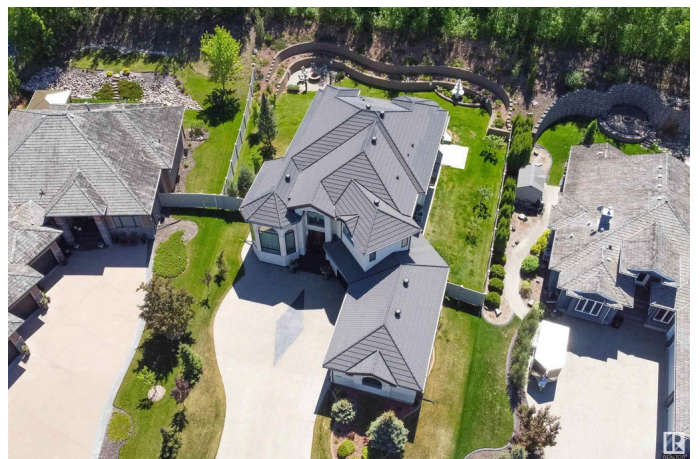
5 Bedroom, 4.50 Bathroom, 3,604 sqft

Rural on 0.36 Acres

Fountain Creek Estates, Rural Strathcona County, AB

LUXURIOUS & EXQUISITE CUSTOM BUILT HOME IN FOUNTAIN CREEK ESTATES!

High quality finishings throughout! 5488 square feet of total living space! Featuring soaring ceilings, gleaming hardwood floors, an open front living room with double-sided gas fireplace & a massive front dining room. **STUNNING BACKYARD!** Your own private oasis with covered deck, beautiful retaining wall, 7 ft fountain, concrete pad for a future hot-tub. **BEAUTIFUL KITCHEN!** Rich cabinetry, Granite, high end appliances, eating area & island. Lovely main floor laundry & den. Total of 5 bedrooms & 4 bathrooms. Walk-in closets & Primary Bedroom features a private balcony & a **GORGEOUS ENSUITE!** Spacious upper Bonus room with balcony. Amazing basement with huge family room, gas fireplace, 2 bedrooms, bathroom, and storage space. Built-in speakers, central air-conditioning, boiler system & an **OVERSIZED TRIPLE ATTACHED GARAGE!** Aggregate driveway too! Prime location in one of Sherwood Park's most prestigious communities. See it and you will love it!!



Built in 2005

Essential Information

MLS® #	E4439563
Price	\$1,490,000
Bedrooms	5
Bathrooms	4.50
Full Baths	4
Half Baths	1
Square Footage	3,604
Acres	0.36
Year Built	2005
Type	Rural
Sub-Type	Detached Single Family
Style	2 Storey
Status	Active

Community Information

Address	392 52304 Rge Road 233
Area	Rural Strathcona County
Subdivision	Fountain Creek Estates
City	Rural Strathcona County
County	ALBERTA
Province	AB
Postal Code	T8B 1C9

Amenities

Features	Air Conditioner, Deck
----------	-----------------------

Interior

Interior Features	ensuite bathroom
Heating	Forced Air-1, See Remarks, Natural Gas
Fireplace	Yes
Stories	3
Has Basement	Yes
Basement	Full, Finished

Exterior

Exterior	Wood
Exterior Features	Fenced, Landscaped, Private Setting
Construction	Wood
Foundation	Concrete Perimeter

Additional Information

Date Listed May 30th, 2025
Days on Market 47
Zoning Zone 80

DATA IS DEEMED RELIABLE BUT IS NOT GUARANTEED ACCURATE BY THE REALTORS® ASSOCIATION OF EDMONTON. COPYRIGHT 2025 BY THE REALTORS® ASSOCIATION OF EDMONTON. ALL RIGHTS RESERVED.Trademarks are owned or controlled by the Canadian Real Estate Association (CREA) and identify real estate professionals who are members of CREA (REALTOR®, REALTORS®) and/or the quality of services they provide (MLS®, Multiple Listing Service®)
Listing information last updated on July 16th, 2025 at 2:32am MDT