

\$475,000 - 4120 135 Avenue, Edmonton

MLS® #E4438949

\$475,000

5 Bedroom, 3.50 Bathroom, 1,225 sqft
Single Family on 0.00 Acres

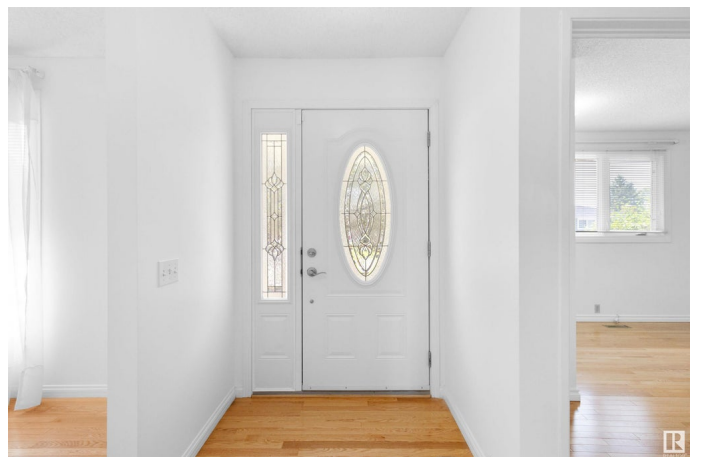
Sifton Park, Edmonton, AB

Spacious bungalow with mature trees and a front drive leading to a double detached garage. A bright living room with white walls and a large front window welcomes you in, flowing into a dining room ideal for gatherings. The kitchen offers excellent potential with ample cabinets, counter space, and a cozy breakfast nook. Down the hall are three bedrooms, including a generous primary with dual closets and an ensuite. Separate entrance to fully finished basement features a large rec room, two bedrooms (one with an ensuite), a den perfect for an office or library, a stylish second kitchen with stainless steel appliances and modern finishes, and an additional bathroom and laundry. The backyard is beautifully landscaped with low-maintenance shrubs—perfect for summer BBQs and entertaining. Ready for your personal touches!

Built in 1976

Essential Information

MLS® #	E4438949
Price	\$475,000
Bedrooms	5
Bathrooms	3.50
Full Baths	3
Half Baths	1



Square Footage	1,225
Acres	0.00
Year Built	1976
Type	Single Family
Sub-Type	Detached Single Family
Style	Bungalow
Status	Active

Community Information

Address	4120 135 Avenue
Area	Edmonton
Subdivision	Sifton Park
City	Edmonton
County	ALBERTA
Province	AB
Postal Code	T5A 2N7

Amenities

Amenities	Air Conditioner, No Animal Home
Parking Spaces	6
Parking	Double Garage Detached

Interior

Interior Features	ensuite bathroom
Appliances	Air Conditioning-Central, Dryer, Freezer, Storage Shed, Washer, Window Coverings, Refrigerators-Two, Stoves-Two, Dishwasher-Two
Heating	Forced Air-1, Natural Gas
Stories	2
Has Basement	Yes
Basement	Full, Finished

Exterior

Exterior	Wood, Stucco
Exterior Features	Fenced, Flat Site, Fruit Trees/Shrubs, Landscaped, Park/Reserve, Playground Nearby, Public Transportation, Shopping Nearby
Roof	Asphalt Shingles
Construction	Wood, Stucco
Foundation	Concrete Perimeter

Additional Information

Date Listed May 28th, 2025

Days on Market 38

Zoning Zone 35

DATA IS DEEMED RELIABLE BUT IS NOT GUARANTEED ACCURATE BY THE REALTORS® ASSOCIATION OF EDMONTON. COPYRIGHT 2025 BY THE REALTORS® ASSOCIATION OF EDMONTON. ALL RIGHTS RESERVED. Trademarks are owned or controlled by the Canadian Real Estate Association (CREA) and identify real estate professionals who are members of CREA (REALTOR®, REALTORS®) and/or the quality of services they provide (MLS®, Multiple Listing Service®)

Listing information last updated on July 5th, 2025 at 9:47am MDT