

\$55,000 - 9535 135 Avenue, Edmonton

MLS® #E4438666

\$55,000

0 Bedroom, 0.00 Bathroom,
Business on 0.00 Acres

Glengarry, Edmonton, AB

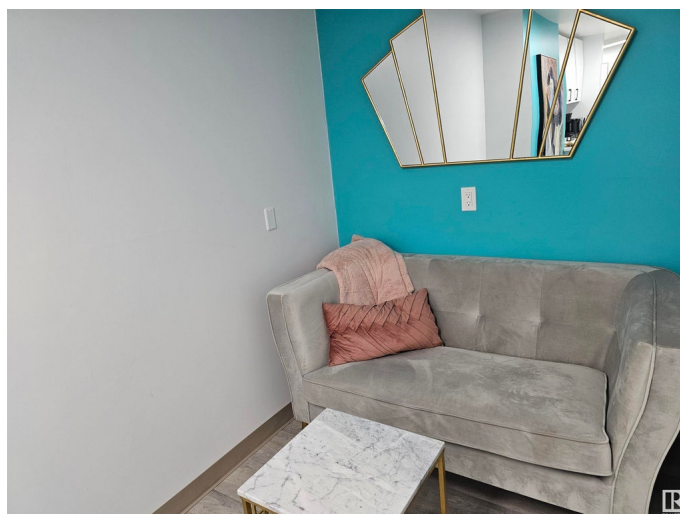
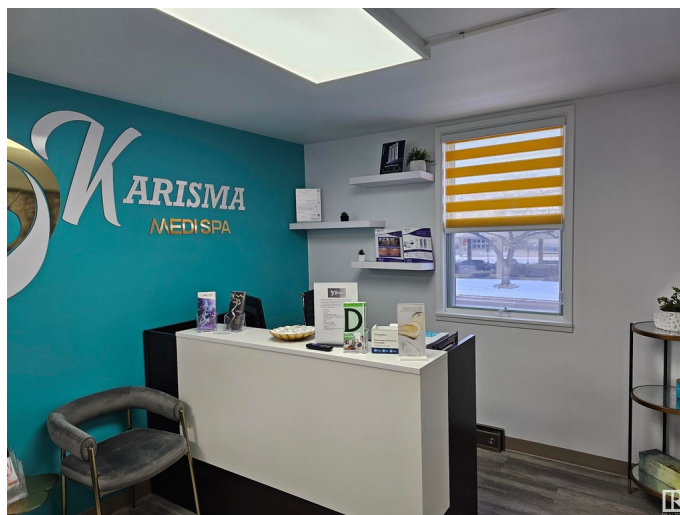
Great opportunity to own a fully equipped and operating medi-spa. Located in a busy area with great exposure, lease in place for 5 years at a very affordable rate. Some services offered include: Laser, facials, various facial fillers and Botox with the ability to expand to offer additional services. Beautifully renovated and operating for over 1 year with 3 procedure rooms and reception area. Buyer must assume the lease on the pieces of 3 medi-spa equipment. All equipment is just over 1 year old. Don't miss this opportunity!

Essential Information

MLS® #	E4438666
Price	\$55,000
Bathrooms	0.00
Acres	0.00
Type	Business
Status	Active

Community Information

Address	9535 135 Avenue
Area	Edmonton
Subdivision	Glengarry
City	Edmonton
County	ALBERTA
Province	AB



Postal Code T5E 1N8

Additional Information

Date Listed May 26th, 2025

Days on Market 71

Zoning Zone 02

DATA IS DEEMED RELIABLE BUT IS NOT GUARANTEED ACCURATE BY THE REALTORS® ASSOCIATION OF EDMONTON. COPYRIGHT 2025 BY THE REALTORS® ASSOCIATION OF EDMONTON. ALL RIGHTS RESERVED.Trademarks are owned or controlled by the Canadian Real Estate Association (CREA) and identify real estate professionals who are members of CREA (REALTOR®, REALTORS®) and/or the quality of services they provide (MLS®, Multiple Listing Service®)

Listing information last updated on August 4th, 2025 at 11:03pm MDT