

## \$649,000 - 425 Buchanan Road, Edmonton

MLS® #E4435860

**\$649,000**

6 Bedroom, 3.50 Bathroom, 2,013 sqft

Single Family on 0.00 Acres

Bulyea Heights, Edmonton, AB

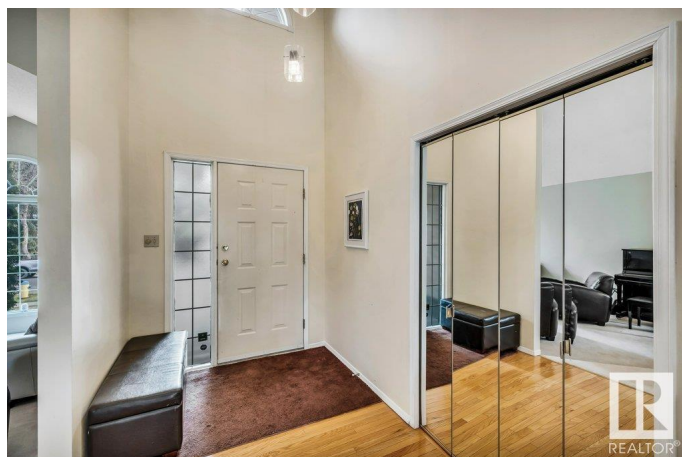
Discover Your Dream Home in Prestigious Bulyea Heights! The main floor boasts a flowing layout, perfect for both relaxed family living and entertaining. Hardwood floors extend through much of this level, leading you into a generously proportioned living room, a well appointed kitchen with rich cabinetry, expansive granite countertops offering ample prep space. The luxurious primary suite offers a spacious bedroom, WI-Closet, and a spa-like ensuite bathroom with a jetted soaker tub and separate shower. Two additional generously sized bedrooms on this floor provide comfortable accommodation for family or guests, each with ample closet space and sharing access to a full bathroom. Step outside into your private backyard oasis featuring a spacious deck, perfect for summer BBQ's equipped with a gas line for added convenience or simply relax with a good book while enjoying the mature landscaping that provides both beauty and privacy. The double attached garage offers convenience and secure parking.

Built in 1990

### Essential Information

MLS® # E4435860

Price \$649,000



Bedrooms	6
Bathrooms	3.50
Full Baths	3
Half Baths	1
Square Footage	2,013
Acres	0.00
Year Built	1990
Type	Single Family
Sub-Type	Detached Single Family
Style	2 Storey
Status	Active

### Community Information

Address	425 Buchanan Road
Area	Edmonton
Subdivision	Bulyea Heights
City	Edmonton
County	ALBERTA
Province	AB
Postal Code	T6R 2A5

### Amenities

Amenities	See Remarks
Parking	Double Garage Attached, Over Sized

### Interior

Interior Features	ensuite bathroom
Appliances	Dishwasher-Built-In, Dryer, Microwave Hood Fan, Refrigerator, Stove-Electric, Washer, Window Coverings
Heating	Forced Air-1, Natural Gas
Fireplace	Yes
Fireplaces	Fresh Air, Tile Surround
Stories	3
Has Basement	Yes
Basement	Full, Finished

### Exterior

Exterior	Wood, Stucco
Exterior Features	Fenced, Flat Site, Landscaped, Playground Nearby, Public

	Transportation, Schools, Shopping Nearby, Treed Lot
Roof	Cedar Shakes
Construction	Wood, Stucco
Foundation	Concrete Perimeter

### **Additional Information**

Date Listed	May 11th, 2025
Days on Market	20
Zoning	Zone 14
HOA Fees	153
HOA Fees Freq.	Annually

DATA IS DEEMED RELIABLE BUT IS NOT GUARANTEED ACCURATE BY THE REALTORS® ASSOCIATION OF EDMONTON. COPYRIGHT 2025 BY THE REALTORS® ASSOCIATION OF EDMONTON. ALL RIGHTS RESERVED. Trademarks are owned or controlled by the Canadian Real Estate Association (CREA) and identify real estate professionals who are members of CREA (REALTOR®, REALTORS®) and/or the quality of services they provide (MLS®, Multiple Listing Service®)

Listing information last updated on May 31st, 2025 at 6:02pm MDT