

## \$75,000 - N/A, Edmonton

---

MLS® #E4435566

**\$75,000**

1 Bedroom, 1.00 Bathroom, 533 sqft

Condo / Townhouse on 0.00 Acres

Belvedere, Edmonton, AB

A great starter home. Spacious one bedroom walking distance to LRT , on bus route. Easy access to Downtown, University of Alberta, Anthony Henday, Yellowhead. new paint, builtin dishwasher, beautiful ceramic flooring, laminate flooring , hugh west facing balcony. walking distance to Elementary school. well managed building with low condo fee. A truly value packed starter home.

Built in 1983

### Essential Information

MLS® #	E4435566
Price	\$75,000
Bedrooms	1
Bathrooms	1.00
Full Baths	1
Square Footage	533
Acres	0.00
Year Built	1983
Type	Condo / Townhouse
Sub-Type	Apartment High Rise
Style	Single Level Apartment
Status	Active

### Community Information

Address	N/A
Area	Edmonton



Subdivision	Belvedere
City	Edmonton
County	ALBERTA
Province	AB
Postal Code	T5C 0A4

### Amenities

Amenities	Intercom
Parking	See Remarks

### Interior

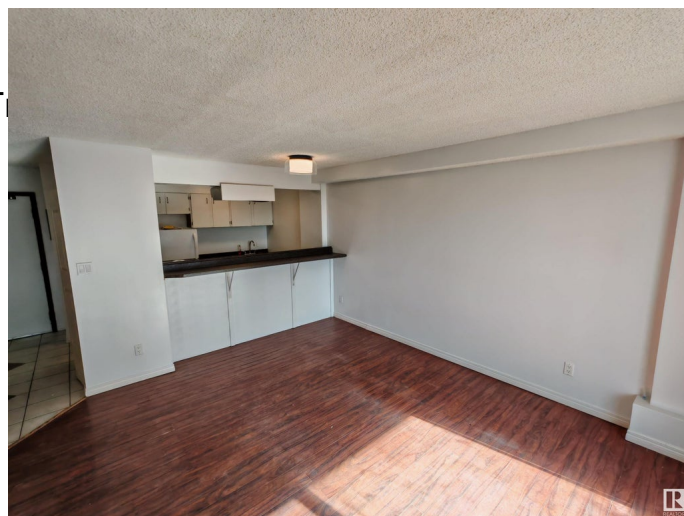
Appliances	Dishwasher-Built-In, Hood Fa
Heating	Baseboard, Natural Gas
# of Stories	8
Stories	1
Has Basement	Yes
Basement	None, No Basement

### Exterior

Exterior	Concrete, Brick
Exterior Features	Playground Nearby, Public T
Roof	Tar & Gravel
Construction	Concrete, Brick
Foundation	Concrete Perimeter

### Additional Information

Date Listed	May 9th, 2025
Days on Market	37
Zoning	Zone 02
Condo Fee	\$359



DATA IS DEEMED RELIABLE BUT IS NOT GUARANTEED ACCURATE BY THE REALTORS® ASSOCIATION OF EDMONTON. COPYRIGHT 2025 BY THE REALTORS® ASSOCIATION OF EDMONTON. ALL RIGHTS RESERVED. Trademarks are owned or controlled by the Canadian Real Estate Association (CREA) and identify real estate professionals who are members of CREA (REALTOR®, REALTORS®) and/or the quality of services they provide (MLS®, Multiple Listing Service®)

Listing information last updated on June 15th, 2025 at 7:17pm MDT