

\$389,900 - 1405 10649 Saskatchewan Drive, Edmonton

MLS® #E4435428

\$389,900

2 Bedroom, 2.00 Bathroom, 985 sqft

Condo / Townhouse on 0.00 Acres

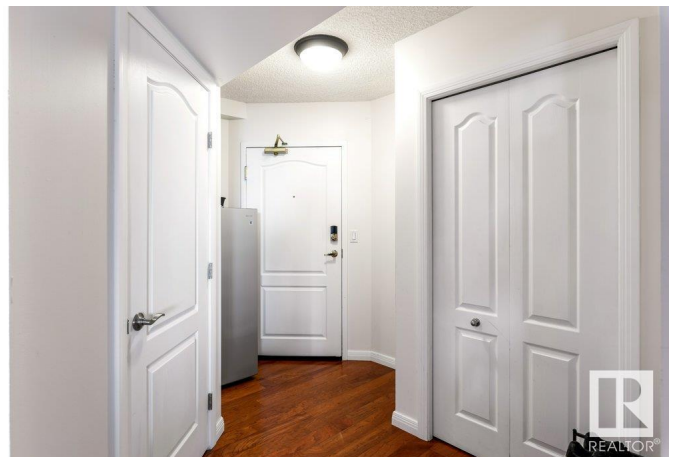
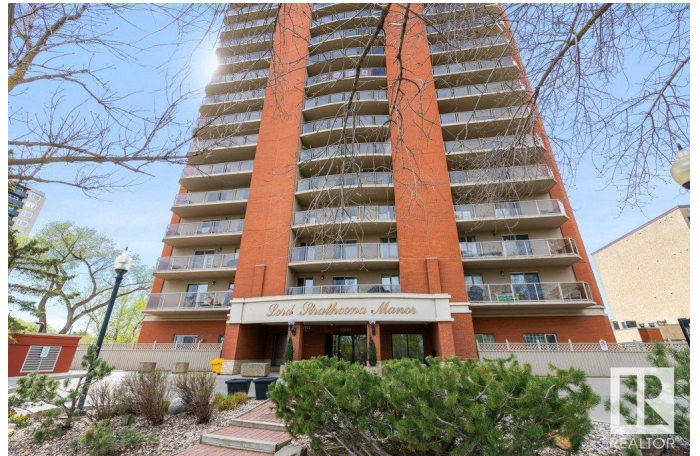
Strathcona, Edmonton, AB

MILLION DOLLAR VIEW on SASKATCHEWAN DRIVE! 14th floor, 2 BED, 2 BATH CORNER UNIT extensively upgraded with air conditioning, 2 Titled underground parking stalls, 2 balconies & Titled storage unit! Hardwood floors throughout, Titanium Granite counters, Solid dark cherry cabinets, new modern fireplace, Gorgeous En Suite with STEAM SHOWER. Large dining nook to fit table, access to private balcony to enjoy your morning sunrise coffee with natural gas BBQ hook up! 2 Spacious bedrooms with built in custom California Closet organizers, includes a master with 4 pce ensuite & double closets with access to a private south facing balcony! This unit features 2 heated underground titled stalls with bike storage. All conveniently located close to Whyte Ave, Downtown, river valley trails, restaurants & public transportation!

Built in 1999

Essential Information

MLS® #	E4435428
Price	\$389,900
Bedrooms	2
Bathrooms	2.00
Full Baths	2
Square Footage	985



Acres	0.00
Year Built	1999
Type	Condo / Townhouse
Sub-Type	Apartment High Rise
Style	Single Level Apartment
Status	Active

Community Information

Address	1405 10649 Saskatchewan Drive
Area	Edmonton
Subdivision	Strathcona
City	Edmonton
County	ALBERTA
Province	AB
Postal Code	T6E 6S8

Amenities

Amenities	Closet Organizers, Deck, Exercise Room, Intercom, Parking-Visitor, Secured Parking
Parking	Heated, Parkade, Underground

Interior

Interior Features	ensuite bathroom
Appliances	Dishwasher-Built-In, Microwave Hood Fan, Refrigerator, Stacked Washer/Dryer, Stove-Electric, Window Coverings
Heating	Heat Pump, Natural Gas
Fireplace	Yes
Fireplaces	Corner
# of Stories	17
Stories	1
Has Basement	Yes
Basement	None, No Basement

Exterior

Exterior	Concrete, Brick
Exterior Features	Golf Nearby, Landscaped, Park/Reserve, Picnic Area, Playground Nearby, Public Swimming Pool, Public Transportation, River Valley View, Schools, Shopping Nearby, View Downtown
Roof	Tar & Gravel

Construction	Concrete, Brick
Foundation	Concrete Perimeter

School Information

Elementary	Garneau
Middle	Mckernan
High	Strathcona

Additional Information

Date Listed	May 9th, 2025
Days on Market	47
Zoning	Zone 15
Condo Fee	\$719

DATA IS DEEMED RELIABLE BUT IS NOT GUARANTEED ACCURATE BY THE REALTORS® ASSOCIATION OF EDMONTON. COPYRIGHT 2025 BY THE REALTORS® ASSOCIATION OF EDMONTON. ALL RIGHTS RESERVED.Trademarks are owned or controlled by the Canadian Real Estate Association (CREA) and identify real estate professionals who are members of CREA (REALTOR®, REALTORS®) and/or the quality of services they provide (MLS®, Multiple Listing Service®)

Listing information last updated on June 25th, 2025 at 10:02am MDT