

## \$155,000 - 303 10149 83 Avenue, Edmonton

MLS® #E4434497

**\$155,000**

2 Bedroom, 1.00 Bathroom, 802 sqft

Condo / Townhouse on 0.00 Acres

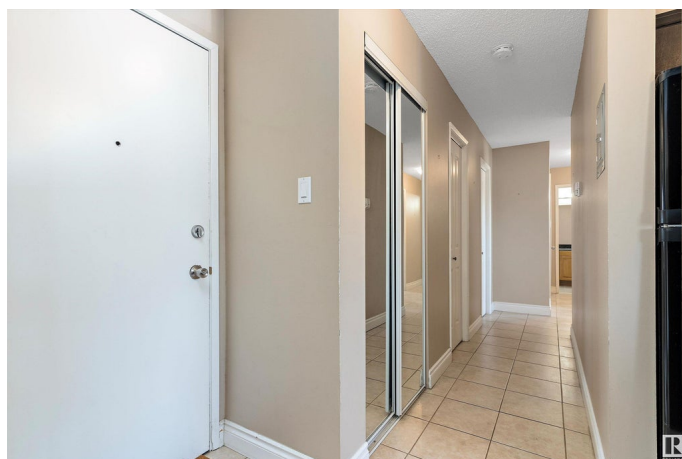
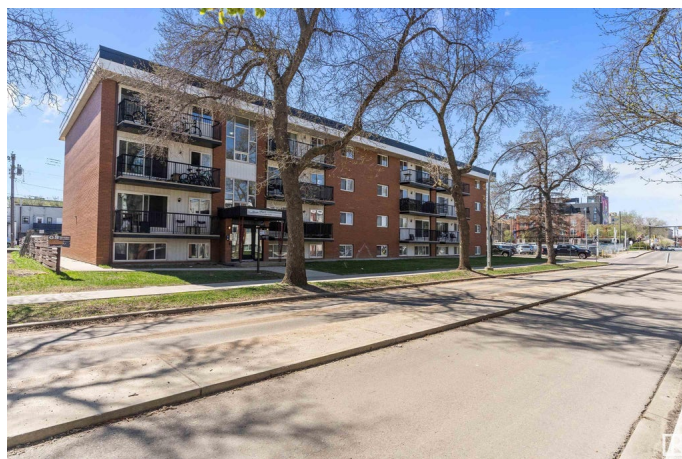
Strathcona, Edmonton, AB

The heart of Whyte Ave. This SOUTH facing unit has an abundance of light and space. This 2 bedroom/1 bathroom unit offers a bright living room with laminate floors, recently renovated bathroom including a new tub with tile surround and floors. RARE in-suite laundry with great storage. Upgraded kitchen with fantastic cabinetry. Exterior upgrades include roof and balconies. Perfect location with access to all that Strathcona has to offer. Walking distance to the River Valley, Mill creek and kiddy corner from the Strathcona Farmer's Market. On a major bus route for easy transportation to the U of A or Downtown.

Built in 1971

### Essential Information

MLS® #	E4434497
Price	\$155,000
Bedrooms	2
Bathrooms	1.00
Full Baths	1
Square Footage	802
Acres	0.00
Year Built	1971
Type	Condo / Townhouse
Sub-Type	Lowrise Apartment
Style	Single Level Apartment



Status Active

### Community Information

Address 303 10149 83 Avenue  
Area Edmonton  
Subdivision Strathcona  
City Edmonton  
County ALBERTA  
Province AB  
Postal Code T6E 2C5

### Amenities

Amenities On Street Parking, No Animal Home, No Smoking Home  
Parking No Garage, Stall, See Remarks

### Interior

Appliances Dishwasher-Built-In, Oven-Microwave, Refrigerator, Stove-Electric, Washer, Window Coverings  
Heating Baseboard, Natural Gas  
# of Stories 4  
Stories 1  
Has Basement Yes  
Basement None, No Basement

### Exterior

Exterior Wood, Brick, Stucco  
Exterior Features Back Lane, Corner Lot, Flat Site, Level Land, Not Fenced, Playground Nearby, Public Swimming Pool, Public Transportation, Schools, Shopping Nearby  
Roof Tar & Gravel  
Construction Wood, Brick, Stucco  
Foundation Concrete Perimeter

### Additional Information

Date Listed May 5th, 2025  
Days on Market 135  
Zoning Zone 15  
Condo Fee \$574

DATA IS DEEMED RELIABLE BUT IS NOT GUARANTEED ACCURATE BY THE REALTORS® ASSOCIATION OF EDMONTON. COPYRIGHT 2025 BY THE REALTORS® ASSOCIATION OF EDMONTON. ALL RIGHTS

RESERVED.Trademarks are owned or controlled by the Canadian Real Estate Association (CREA) and identify real estate professionals who are members of CREA (REALTOR®, REALTORS®) and/or the quality of services they provide (MLS®, Multiple Listing Service®)

Listing information last updated on September 17th, 2025 at 11:48am MDT