

\$415,000 - 11719 158 Avenue, Edmonton

MLS® #E4433968

\$415,000

5 Bedroom, 2.50 Bathroom, 1,140 sqft

Single Family on 0.00 Acres

Dunluce, Edmonton, AB

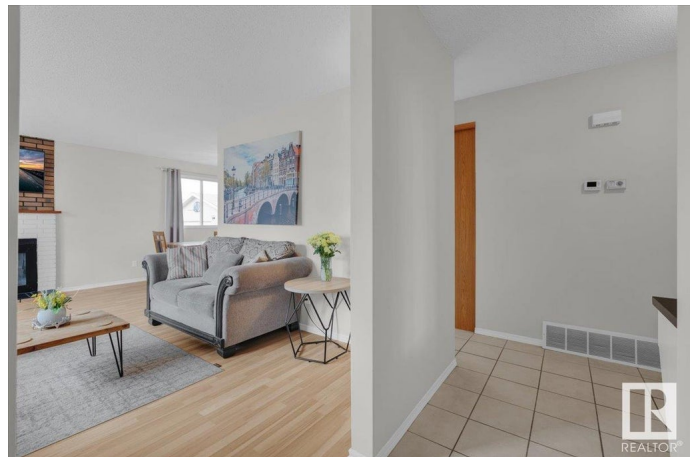
Well maintained bungalow w/ a double attached garage on a 6600+SQFT Lot! Welcome to Dunluce, a quiet, family friendly community w/ a rec centre, public transportation, schools & MORE! Youâ€™ll love all the natural light from the large windows all along the front of the home. The living room has a wood burning fireplace, and opens up to the dinning room. Perfect for entertaining. The kitchen has some newer appliances, granite countertops, and no shortage of cabinetry! Upstairs has 3 bedrooms total, & a 4pc bathroom w/ a new tub surround. The large primary room has a 2pc ensuite. The basement is fully finished w/ a large rec room, 2 bedrooms (one w/ a 3pc ensuite) & loads of storage space! Other upgrades include: New 50 year shingles, newer HWT, freshly painted, heated/ insulated double garage & MORE! Outside youâ€™ll find your massive sunny SOUTH FACING backyard w/ a garden, shed & fruit trees! Includes basement wall shelving, TV mounts, & curtain rods. For more details please visit the REALTORâ€™s Website.

Built in 1976

Essential Information

MLS® # E4433968

Price \$415,000



Bedrooms	5
Bathrooms	2.50
Full Baths	2
Half Baths	1
Square Footage	1,140
Acres	0.00
Year Built	1976
Type	Single Family
Sub-Type	Detached Single Family
Style	Bungalow
Status	Active

Community Information

Address	11719 158 Avenue
Area	Edmonton
Subdivision	Dunluce
City	Edmonton
County	ALBERTA
Province	AB
Postal Code	T5X 2K3

Amenities

Amenities	See Remarks
Parking Spaces	4
Parking	Double Garage Attached, Heated, Insulated

Interior

Interior Features	ensuite bathroom
Appliances	Dishwasher-Built-In, Dryer, Garage Control, Garage Opener, Microwave Hood Fan, Refrigerator, Stove-Electric, Washer, See Remarks
Heating	Forced Air-1, Natural Gas
Stories	2
Has Basement	Yes
Basement	Full, Finished

Exterior

Exterior	Wood, See Remarks
Exterior Features	Fenced, Fruit Trees/Shrubs, Landscaped, Public Transportation, Schools, Shopping Nearby

Roof	Asphalt Shingles
Construction	Wood, See Remarks
Foundation	Concrete Perimeter

School Information

Elementary	Dunluce/St. Lucy
Middle	Rosslyn/Sir John
High	Queen Eliz./Arch. O'Leary

Additional Information

Date Listed	May 2nd, 2025
Days on Market	7
Zoning	Zone 27

DATA IS DEEMED RELIABLE BUT IS NOT GUARANTEED ACCURATE BY THE REALTORS® ASSOCIATION OF EDMONTON. COPYRIGHT 2025 BY THE REALTORS® ASSOCIATION OF EDMONTON. ALL RIGHTS RESERVED. Trademarks are owned or controlled by the Canadian Real Estate Association (CREA) and identify real estate professionals who are members of CREA (REALTOR®, REALTORS®) and/or the quality of services they provide (MLS®, Multiple Listing Service®)

Listing information last updated on May 9th, 2025 at 9:02pm MDT