

\$600,000 - 216 Crystal Creek Drive, Leduc

MLS® #E4433938

\$600,000

3 Bedroom, 3.00 Bathroom, 2,090 sqft
Single Family on 0.00 Acres

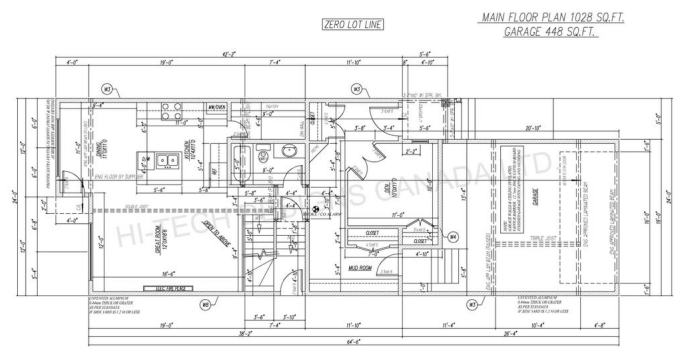
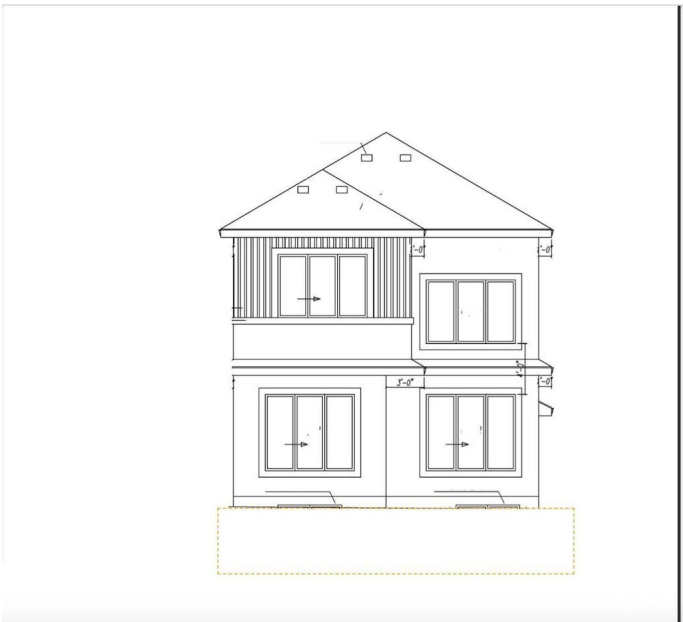
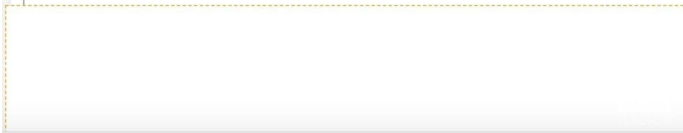
Crystal Creek_LEDU, Leduc, AB

Welcome to this stunning two-storey home in Leduc! The main floor offers a bright and open layout with a cozy living room featuring a fireplace, a dining area, a stylish kitchen with a pantry, a 4-piece bathroom, a den, and a mudroom for added convenience. Upstairs, you'll find a spacious bonus room, two bedrooms, a 4-piece bathroom, a laundry room and a luxurious primary suite with a walk-in closet and a 5-piece ensuite. Completing the home is an attached double garage, making it the perfect blend of style and functionality. Photos are of a completed show home and are for representation only. Selections can be customized

Built in 2025

Essential Information

| | |
|----------------|------------------------|
| MLS® # | E4433938 |
| Price | \$600,000 |
| Bedrooms | 3 |
| Bathrooms | 3.00 |
| Full Baths | 3 |
| Square Footage | 2,090 |
| Acres | 0.00 |
| Year Built | 2025 |
| Type | Single Family |
| Sub-Type | Detached Single Family |



| | |
|--------|----------|
| Style | 2 Storey |
| Status | Active |

Community Information

| | |
|-------------|-------------------------|
| Address | 216 Crystal Creek Drive |
| Area | Leduc |
| Subdivision | Crystal Creek_LEDU |
| City | Leduc |
| County | ALBERTA |
| Province | AB |
| Postal Code | T9E 1N3 |

Amenities

| | |
|-----------|--|
| Amenities | Detectors Smoke, No Animal Home, No Smoking Home |
| Parking | Double Garage Attached |

Interior

| | |
|-------------------|---------------------------|
| Interior Features | ensuite bathroom |
| Appliances | See Remarks |
| Heating | Forced Air-1, Natural Gas |
| Fireplace | Yes |
| Fireplaces | Tile Surround |
| Stories | 2 |
| Has Basement | Yes |
| Basement | Full, Unfinished |

Exterior

| | |
|-------------------|--|
| Exterior | Wood, Stone, Vinyl |
| Exterior Features | Playground Nearby, Public Transportation, Schools, Shopping Nearby |
| Roof | Asphalt Shingles |
| Construction | Wood, Stone, Vinyl |
| Foundation | Concrete Perimeter |

Additional Information

| | |
|----------------|---------------|
| Date Listed | May 1st, 2025 |
| Days on Market | 137 |
| Zoning | Zone 81 |

DATA IS DEEMED RELIABLE BUT IS NOT GUARANTEED ACCURATE BY THE REALTORS® ASSOCIATION OF EDMONTON. COPYRIGHT 2025 BY THE REALTORS® ASSOCIATION OF EDMONTON. ALL RIGHTS RESERVED. Trademarks are owned or controlled by the Canadian Real Estate Association (CREA) and identify real

estate professionals who are members of CREA (REALTOR®®, REALTORS®®) and/or the quality of services they provide (MLS®®, Multiple Listing Service®®)

Listing information last updated on September 15th, 2025 at 7:17pm MDT