

# \$619,900 - 37 Gable Common, Spruce Grove

MLS® #E4433648

**\$619,900**

3 Bedroom, 2.50 Bathroom, 1,885 sqft  
Single Family on 0.00 Acres

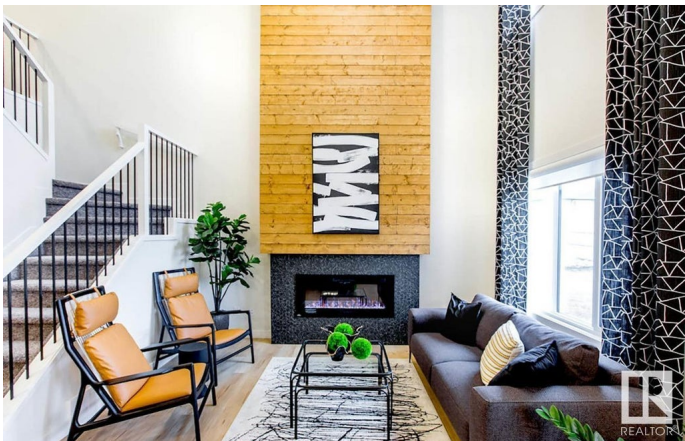
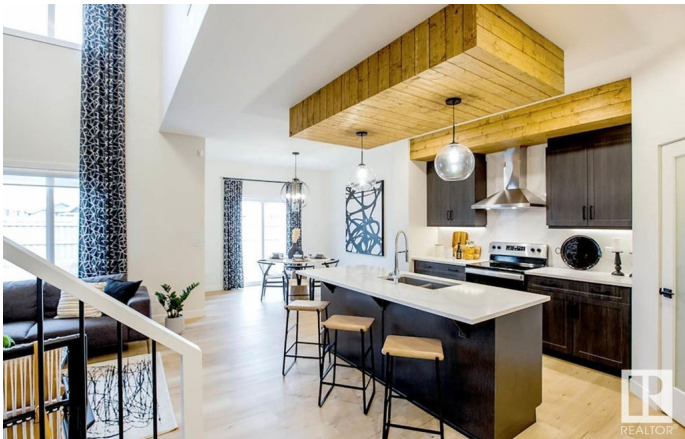
Greenbury, Spruce Grove, AB

The Tristen by San Rufo Homes is all about smart design and stunning details. As you step inside, youâ€™re greeted by an open-concept main floor that flows effortlessly from the kitchen to the dining area and great room. The kitchen features a large island, hood fan above the stove, walk-through pantry, and full quartz countertops that continue throughout the homeâ€™s including all bathrooms. The great room steals the show with its soaring open-to-above ceilings. From the upper floor, you can even look down into the great roomâ€™s adding a feeling of connection across both levels. Upstairs, the bonus room offers flexible space, while the primary bedroom provides a private retreat with a walk-in closet and a spa-inspired ensuite complete with dual sinks, a drop-in tub, and a separate shower. Two additional bedrooms, a full bath, and a second-floor laundry room round out the upper level for full convenience. Photos are representative.

Built in 2025

## Essential Information

MLS® #	E4433648
Price	\$619,900
Bedrooms	3
Bathrooms	2.50



Full Baths	2
Half Baths	1
Square Footage	1,885
Acres	0.00
Year Built	2025
Type	Single Family
Sub-Type	Detached Single Family
Style	2 Storey
Status	Active

### **Community Information**

Address	37 Gable Common
Area	Spruce Grove
Subdivision	Greenbury
City	Spruce Grove
County	ALBERTA
Province	AB
Postal Code	T7X 2W2

### **Amenities**

Amenities	No Animal Home, No Smoking Home
Parking Spaces	4
Parking	Double Garage Attached

### **Interior**

Interior Features	ensuite bathroom
Appliances	None
Heating	Forced Air-1, Natural Gas
Fireplace	Yes
Fireplaces	Insert
Stories	2
Has Basement	Yes
Basement	Full, Unfinished

### **Exterior**

Exterior	Wood, Stone, Vinyl
Exterior Features	Park/Reserve, Playground Nearby, Schools, Shopping Nearby
Roof	Asphalt Shingles
Construction	Wood, Stone, Vinyl

Foundation                      Concrete Perimeter

**Additional Information**

Date Listed                      April 30th, 2025

Days on Market                138

Zoning                              Zone 91

DATA IS DEEMED RELIABLE BUT IS NOT GUARANTEED ACCURATE BY THE REALTORS® ASSOCIATION OF EDMONTON. COPYRIGHT 2025 BY THE REALTORS® ASSOCIATION OF EDMONTON. ALL RIGHTS RESERVED.Trademarks are owned or controlled by the Canadian Real Estate Association (CREA) and identify real estate professionals who are members of CREA (REALTOR®, REALTORS®) and/or the quality of services they provide (MLS®, Multiple Listing Service®)

Listing information last updated on September 15th, 2025 at 7:17pm MDT