

\$239,900 - 6 15128 22 Street, Edmonton

MLS® #E4431308

\$239,900

2 Bedroom, 1.50 Bathroom, 1,062 sqft

Condo / Townhouse on 0.00 Acres

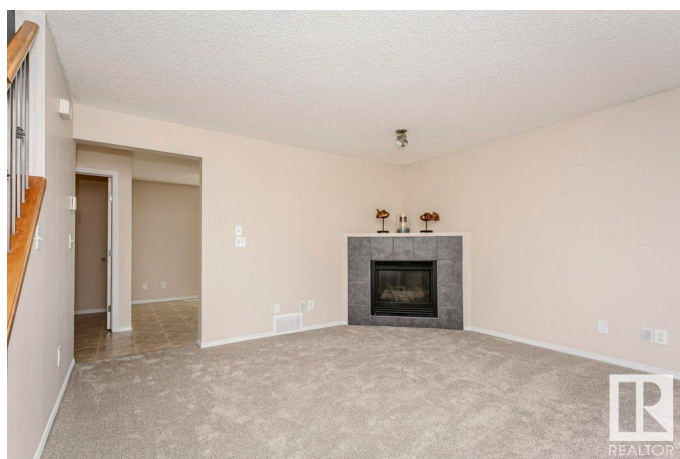
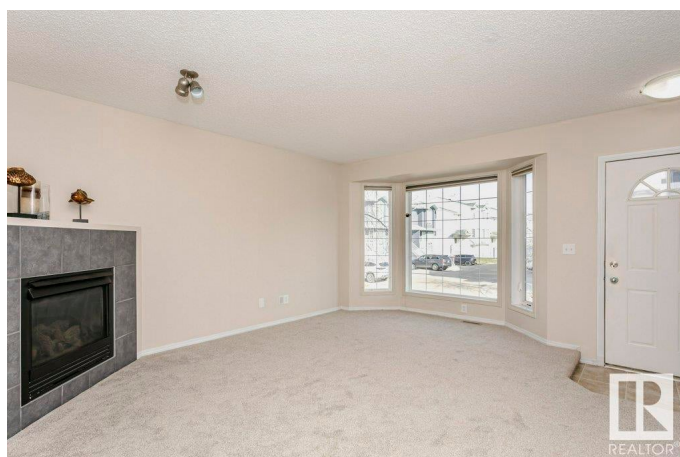
Fraser, Edmonton, AB

Corner Unit, Move-In Ready 2-Storey Townhouse! This bright and spacious 2 bed, 1.5 bath home offers the perfect blend of comfort and convenience. Fresh new carpet and warm neutral tones create a welcoming feel throughout. The main floor features a large living room with cozy gas fireplace, a handy half bath, and a bright eat-in kitchen with pantry, ample cupboard and counter space, and patio doors leading to a sunny south-facing deck overlooking greenspace. Upstairs, you'll find two generous bedrooms and a full 4-piece bath with extra storage. The lower level includes laundry, storage, utility room, and access to the oversized single garage. Ideally located near schools, shopping, transit, and all amenitiesâ€™ plus, just minutes from the Anthony Henday for quick & easy access around the city. This affordable gem is perfect for first-time buyers, downsizers, or investors. You've got to see this place, I think you'll really like it!

Built in 2002

Essential Information

MLS® #	E4431308
Price	\$239,900
Bedrooms	2
Bathrooms	1.50



Full Baths	1
Half Baths	1
Square Footage	1,062
Acres	0.00
Year Built	2002
Type	Condo / Townhouse
Sub-Type	Townhouse
Style	2 Storey
Status	Active

Community Information

Address	6 15128 22 Street
Area	Edmonton
Subdivision	Fraser
City	Edmonton
County	ALBERTA
Province	AB
Postal Code	T5Y 2W5

Amenities

Amenities	Deck, Vinyl Windows, See Remarks
Parking Spaces	2
Parking	Single Garage Attached

Interior

Appliances	Dishwasher-Built-In, Garage Control, Garage Opener, Refrigerator, Stacked Washer/Dryer, Stove-Electric
Heating	Forced Air-1, Natural Gas
Fireplace	Yes
Fireplaces	Mantel
Stories	3
Has Basement	Yes
Basement	Full, Partially Finished

Exterior

Exterior	Wood, Stucco
Exterior Features	Corner Lot, Landscaped, Playground Nearby, Public Transportation, Schools, Shopping Nearby, See Remarks
Roof	Asphalt Shingles

Construction	Wood, Stucco
Foundation	Concrete Perimeter

Additional Information

Date Listed	April 17th, 2025
Days on Market	14
Zoning	Zone 35
Condo Fee	\$446

DATA IS DEEMED RELIABLE BUT IS NOT GUARANTEED ACCURATE BY THE REALTORS® ASSOCIATION OF EDMONTON. COPYRIGHT 2025 BY THE REALTORS® ASSOCIATION OF EDMONTON. ALL RIGHTS RESERVED.Trademarks are owned or controlled by the Canadian Real Estate Association (CREA) and identify real estate professionals who are members of CREA (REALTOR®, REALTORS®) and/or the quality of services they provide (MLS®, Multiple Listing Service®)

Listing information last updated on May 1st, 2025 at 2:33pm MDT