

## \$639,900 - 16226 100a Avenue, Edmonton

MLS® #E4430873

**\$639,900**

0 Bedroom, 0.00 Bathroom,  
Land Commercial on 0.00 Acres

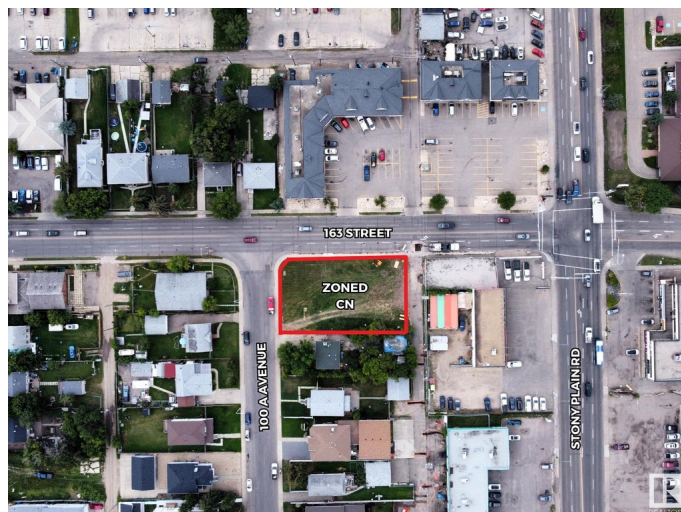
Glenwood (Edmonton), Edmonton, AB

Prime development opportunity on a highly visible CN zoned corner lot! Located in a bustling commercial district, this flat vacant land is perfect for a variety of business ventures, including retail, office, or mixed-use developments. With its CN zoning, the property allows for a wide range of commercial uses, providing maximum flexibility for your business needs. This corner lot offers excellent street frontage, ensuring high traffic visibility and easy accessibility for customers and clients. Situated in a vibrant commercial district, this site offers unparalleled opportunities for development in a growing area. Surrounded by established businesses and with close proximity to major roads, this site provides the perfect location for a new commercial project. Capitalize on this prime piece of real estate and bring your development vision to life.

### Essential Information

MLS® #	E4430873
Price	\$639,900
Bathrooms	0.00
Acres	0.00
Type	Land Commercial
Status	Active

### Community Information



Address	16226 100a Avenue
Area	Edmonton
Subdivision	Glenwood (Edmonton)
City	Edmonton
County	ALBERTA
Province	AB
Postal Code	T5P 0M3

### **Additional Information**

Date Listed	April 14th, 2025
Days on Market	89
Zoning	Zone 22

DATA IS DEEMED RELIABLE BUT IS NOT GUARANTEED ACCURATE BY THE REALTORS® ASSOCIATION OF EDMONTON. COPYRIGHT 2025 BY THE REALTORS® ASSOCIATION OF EDMONTON. ALL RIGHTS RESERVED. Trademarks are owned or controlled by the Canadian Real Estate Association (CREA) and identify real estate professionals who are members of CREA (REALTOR®, REALTORS®) and/or the quality of services they provide (MLS®, Multiple Listing Service®)

Listing information last updated on July 12th, 2025 at 9:02pm MDT