

\$265,000 - 312 12110 106 Avenue, Edmonton

MLS® #E4428349

\$265,000

2 Bedroom, 2.00 Bathroom, 1,060 sqft

Condo / Townhouse on 0.00 Acres

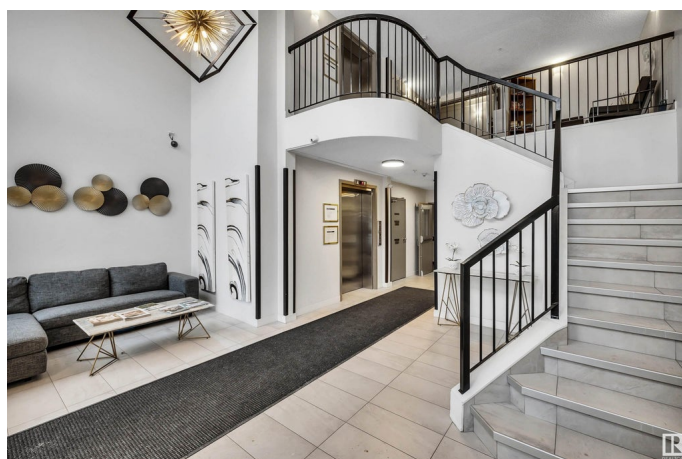
Westmount, Edmonton, AB

Bright & Beautiful spacious upgraded 2 bedrooms/2 baths + DEN is just perfect for you. Unique floor plan with open kitchen and large dining area, comfortable living room with fireplace that separating the second bedroom and the primary bedroom. You will be impressed with the primary bedroom also has access to the balcony, a huge walk-in closet with organizer, remodeled ensuite with built-in vanity and shower. Recent upgrades with quartz countertop and vinyl plank flooring throughout the unit. Other features such as Central Air-Conditioning, in-suite laundry, plenty of storage space, gas hook-up on balcony, gym room across the hall, a tilted underground parking with car wash, a storage cage in front of the parking, also a pet friendly building. Located conveniently by the Brewery District, next to Unity Square Centre, close to Downtown and U OF A. This is a must see on your list!

Built in 2004

Essential Information

MLS® #	E4428349
Price	\$265,000
Bedrooms	2
Bathrooms	2.00
Full Baths	2



Square Footage	1,060
Acres	0.00
Year Built	2004
Type	Condo / Townhouse
Sub-Type	Lowrise Apartment
Style	Single Level Apartment
Status	Active

Community Information

Address	312 12110 106 Avenue
Area	Edmonton
Subdivision	Westmount
City	Edmonton
County	ALBERTA
Province	AB
Postal Code	T5N 4R9

Amenities

Amenities	Air Conditioner, Car Wash, Detectors Smoke, Exercise Room, Parking-Visitor, Patio, Secured Parking, Sprinkler System-Fire, See Remarks, Storage Cage, Natural Gas BBQ Hookup
Parking	Heated, Underground

Interior

Interior Features	ensuite bathroom
Appliances	Air Conditioning-Central, Dishwasher-Built-In, Dryer, Microwave Hood Fan, Refrigerator, Stove-Electric, Washer
Heating	Forced Air-1, Natural Gas
# of Stories	4
Stories	1
Has Basement	Yes
Basement	None, No Basement

Exterior

Exterior	Wood, Stucco
Exterior Features	Fenced, Landscaped, Playground Nearby, Public Transportation, Schools, Shopping Nearby, See Remarks
Roof	Asphalt Shingles
Construction	Wood, Stucco

Foundation Concrete Perimeter

Additional Information

Date Listed April 1st, 2025
Days on Market 30
Zoning Zone 07
Condo Fee \$642

DATA IS DEEMED RELIABLE BUT IS NOT GUARANTEED ACCURATE BY THE REALTORS® ASSOCIATION OF EDMONTON. COPYRIGHT 2025 BY THE REALTORS® ASSOCIATION OF EDMONTON. ALL RIGHTS RESERVED.Trademarks are owned or controlled by the Canadian Real Estate Association (CREA) and identify real estate professionals who are members of CREA (REALTOR®, REALTORS®) and/or the quality of services they provide (MLS®, Multiple Listing Service®)
Listing information last updated on May 1st, 2025 at 12:17pm MDT