

## **\$589,000 - 15 Brunswyck Crescent, Spruce Grove**

MLS® #E4426451

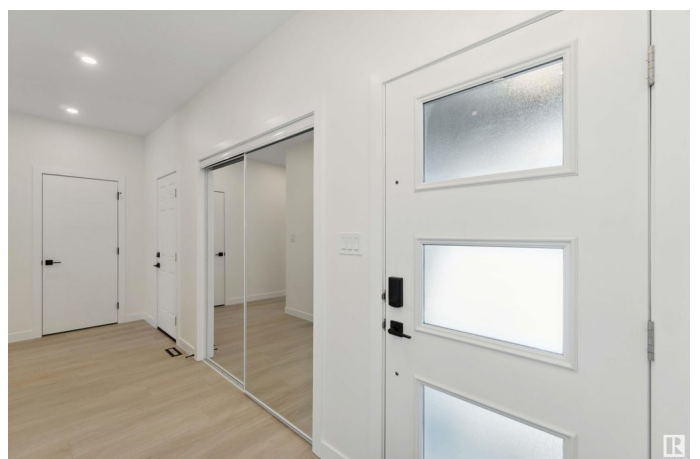
**\$589,000**

2 Bedroom, 2.00 Bathroom, 1,380 sqft

Single Family on 0.00 Acres

Fenwyck, Spruce Grove, AB

BRAND NEW BENCHMARK HOMES BUNGALOW LOCATED ON A PIE SHAPED LOT. DOUBLE ATTACHED GARAGE! WELCOME TO 15 BRUNSWYCK CR. THIS INCREDIBLE HOME HAS JUST OVER 1380 SQUARE FEET OF MAIN FLOOR LIVING SPACE, AN UNSPOILED BASEMENT, AND 2 BEDROOMS. THE UPGRADED KITCHEN INCLUDES A FULL WALK-IN PANTRY, IVORY QUARTZ COUNTERTOPS, STAINLESS APPLIANCES, A WATERED ISLAND WITH EATING BAR, AND VINYL FLOORS. DINING AREA IS SPACIOUS AND OPEN TO KITCHEN. LIVING AREA HAS A CUSTOM FIREPLACE AND IS PERFECT FOR RELAXING OR ENTERTAINING. PRIMARY BEDROOM IS KING SIZED WITH A LARGE WALK-IN CLOSET WITH BUILT IN SHELVING. ENSUITE IS 5 PIECE WITH DOUBLE SINKS, OVER-SIZED STAND ALONE SOAKER TUB, AND SEPARATE SHOWER. MAIN FLOOR ALSO HAS A SPACIOUS GARAGE MUDROOM, MAIN FLOOR LAUNDRY, FULL BATH, AND A 2ND BEDROOM. BASEMENT IS FULL FOOTPRINT AND UNSPOILED. HOME IS LOCATED IN EAST SPRUCE GROVE'S PREMIER COMMUNITY OF FENWYCK WITH EASY ACCESS TO SERVICES AND A SHORT COMMUTE TO EDMONTON. WELCOME HOME! BASEMENT HAS SEPARATE SIDE ENTRANCE.



Built in 2024

Essential Information

MLS® #	E4426451
Price	\$589,000
Bedrooms	2
Bathrooms	2.00
Full Baths	2
Square Footage	1,380
Acres	0.00
Year Built	2024
Type	Single Family
Sub-Type	Detached Single Family
Style	Bungalow
Status	Active

Community Information

Address	15 Brunswyck Crescent
Area	Spruce Grove
Subdivision	Fenwyck
City	Spruce Grove
County	ALBERTA
Province	AB
Postal Code	T7X 0Y9

Amenities

Amenities	Ceiling 9 ft., Closet Organizers, Exterior Walls- 2"x6", No Animal Home, No Smoking Home, Television Connection, Vinyl Windows
Parking	Double Garage Attached

Interior

Interior Features	ensuite bathroom
Appliances	Dishwasher-Built-In, Dryer, Garage Control, Garage Opener, Hood Fan, Refrigerator, Stove-Electric, Washer
Heating	Forced Air-1, Natural Gas
Stories	1
Has Basement	Yes
Basement	Full, Unfinished

Exterior

Exterior	Wood, Stone, Vinyl
Exterior Features	Flat Site, Golf Nearby, Not Fenced, Not Landscaped, Private Setting, Schools, Shopping Nearby, View City
Roof	Asphalt Shingles
Construction	Wood, Stone, Vinyl
Foundation	Concrete Perimeter

**Additional Information**

Date Listed	March 19th, 2025
Days on Market	110
Zoning	Zone 91

DATA IS DEEMED RELIABLE BUT IS NOT GUARANTEED ACCURATE BY THE REALTORS® ASSOCIATION OF EDMONTON. COPYRIGHT 2025 BY THE REALTORS® ASSOCIATION OF EDMONTON. ALL RIGHTS RESERVED.Trademarks are owned or controlled by the Canadian Real Estate Association (CREA) and identify real estate professionals who are members of CREA (REALTOR®, REALTORS®) and/or the quality of services they provide (MLS®, Multiple Listing Service®)

Listing information last updated on July 7th, 2025 at 1:02am MDT