

\$1,198,500 - 19 Rizzie Beach, Rural Parkland County

MLS® #E4425794

\$1,198,500

5 Bedroom, 3.00 Bathroom, 2,748 sqft

Rural on 0.26 Acres

Rizzie Beach, Rural Parkland County, AB

Youâ€™ll fall in love with this gorgeous 2,748 sq ft country-style cottage found on the sunny southwest-facing shores of Rizzie Beach, Wabamun Lake. The large 1/4 acre pie-shaped lot 150 ft long provides 100ft of width at the front and 50 ft of beachfront. The main floor boasts a spacious living room, a dining area, a rustic kitchen with S/S appliances, granite countertops and natural solid wood cabinets and a beautiful bright sunroom surrounded by windows, all with scenic lake views. The primary bdrm includes an en-suite bath, complemented by two additional bdrms and two full baths. The upper floor offers a separate guest suite with a full kitchen and open living room, two more bdrms, and a 3-pc bath providing extra space for family or guests. The property includes an oversized attached double garage, a second detached double garage, a secondary guest house with a bdrm, loft and 2-pc bath and a spacious deck that leads down to the patio with a firepit all surrounded by the beautifully landscaped grounds.

Built in 2009

Essential Information

MLS® #	E4425794
Price	\$1,198,500



Bedrooms	5
Bathrooms	3.00
Full Baths	3
Square Footage	2,748
Acres	0.26
Year Built	2009
Type	Rural
Sub-Type	Detached Single Family
Style	1 and Half Storey
Status	Active

Community Information

Address	19 Rizzie Beach
Area	Rural Parkland County
Subdivision	Rizzie Beach
City	Rural Parkland County
County	ALBERTA
Province	AB
Postal Code	T0E 2K0

Amenities

Features	Crawl Space, Deck, Fire Pit, Lake Privileges, Patio, Sunroom, Vinyl Windows, See Remarks
----------	--

Interior

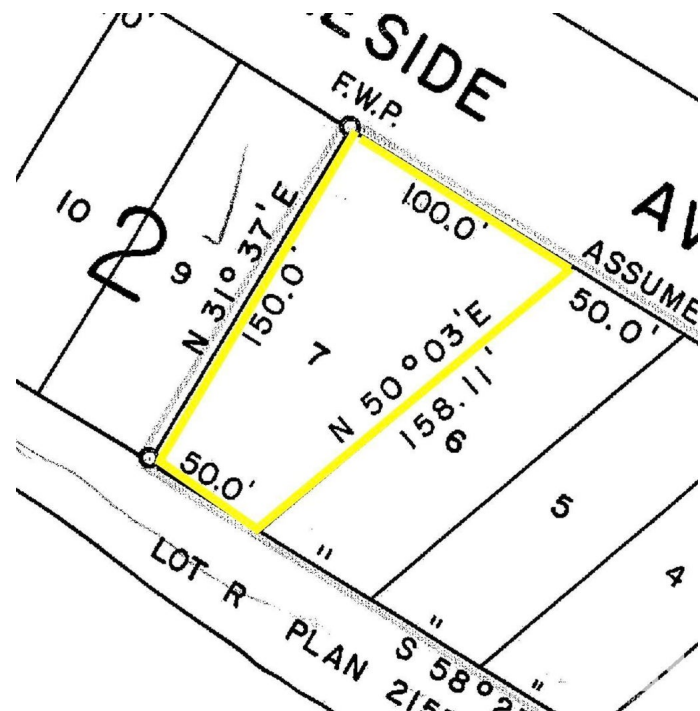
Interior Features	ensuite bathroom
Heating	Forced Air-1, Natural Gas
Fireplace	Yes
Stories	2
Has Basement	Yes
Basement	None, No Basement

Exterior

Exterior	Wood
Exterior Features	Backs Onto Lake, Beach Access, Flat Site, Lake Access Property, Lake View, Landscaped, Level Land, Waterfront Property, Partially Fenced
Construction	Wood
Foundation	Concrete Perimeter

Additional Information

Date Listed March 14th, 2025
Days on Market 72
Zoning Zone 93



DATA IS DEEMED RELIABLE BUT IS NOT GUARANTEED ACCURATE BY THE REALTORS® ASSOCIATION OF EDMONTON. COPYRIGHT 2025 BY THE REALTORS® ASSOCIATION OF EDMONTON. ALL RIGHTS RESERVED. Trademarks are owned or controlled by the Canadian Real Estate Association (CREA) and identify real estate professionals who are members of CREA (REALTOR®, REALTORS®) and/or the quality of services they provide (MLS®, Multiple Listing Service®)
Listing information last updated on May 25th, 2025 at 4:47pm MDT