

# **\$1,495,000 - 26409 Twp Rd 532a, Rural Parkland County**

MLS® #E4420905

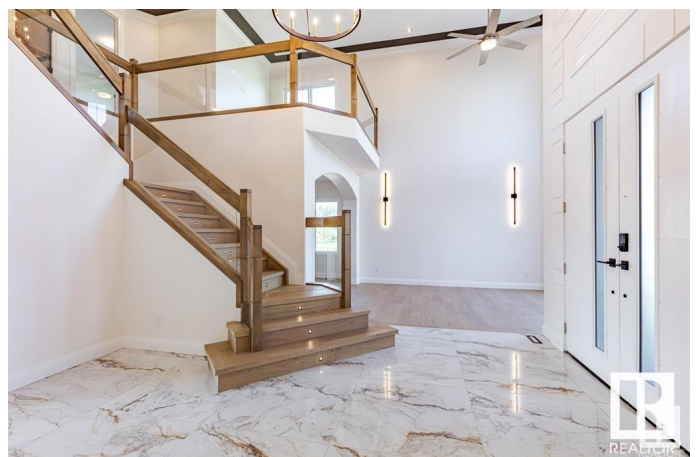
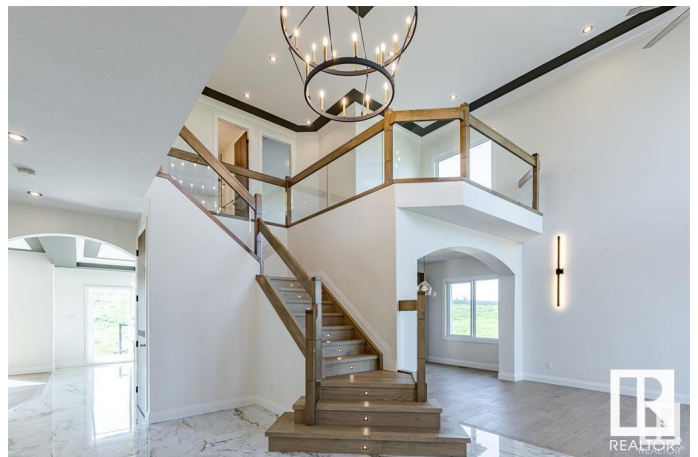
**\$1,495,000**

4 Bedroom, 3.50 Bathroom, 3,501 sqft

Rural on 1.00 Acres

Spring Meadow Estates, Rural Parkland County, AB

Exceptional Value !! Over 3500 sq ft of Gracious Living Above Ground, plus oversized 4.5 all vehicle att garage, bsmt lower level has separate exterior entrance for flexible dev., possible Walkout Basement over 5100 sq ft. total living possible, sunroom option main floor ... 4 Bedrooms up, 4 washrooms, bsmt can be more bdrms, more washrms, media, gym, Your wish etc. Chefs Dream Kitchen with Second Spice Kitchen, Spacious Open High Valuted Ceilings Floor Plan, large windows for major sunlight. Gorgeous very Large Stately Primary Bedroom with Lavish Spa Resort Ensuite, Huge walk in closet, many wardrobe built ins. Upper floor laundry ultimate convenience. Must view built ins throughout, Marble Flooring, Top Vanities, Cabinets, Luxury Appliances, Many Vechicle Driveway, all on hardtop pavement to Your door just 7 minutes from West Edmonton on Amazing 1 Acre Size Lot with City Water, Sewer. Construction Starting, Photos are of sold showhome lot 12 Spring Meadow Estates ASR Projects Inc Dreams are Reality



Built in 2025

## **Essential Information**

MLS® # E4420905

Price \$1,495,000

Bedrooms	4
Bathrooms	3.50
Full Baths	3
Half Baths	1
Square Footage	3,501
Acres	1.00
Year Built	2025
Type	Rural
Sub-Type	Detached Single Family
Style	2 Storey
Status	Active

### Community Information

Address	26409 Twp Rd 532a
Area	Rural Parkland County
Subdivision	Spring Meadow Estates
City	Rural Parkland County
County	ALBERTA
Province	AB
Postal Code	T7X 0W7

### Amenities

Features	Ceiling 10 ft., Ceiling 9 ft., No Animal Home, No Smoking Home, Vaulted Ceiling, Vinyl Windows, 9 ft. Basement Ceiling
Parking Spaces	10

### Interior

Interior Features	ensuite bathroom
Heating	Forced Air-2, Natural Gas
Fireplace	Yes
Stories	3
Has Basement	Yes
Basement	Full, Partially Finished

### Exterior

Exterior	Wood
Exterior Features	Airport Nearby, Golf Nearby, No Through Road, Park/Reserve, See Remarks
Construction	Wood

Foundation                      Concrete Perimeter

**Additional Information**

Date Listed                      February 9th, 2025

Days on Market                81

Zoning                            Zone 70

DATA IS DEEMED RELIABLE BUT IS NOT GUARANTEED ACCURATE BY THE REALTORS® ASSOCIATION OF EDMONTON. COPYRIGHT 2025 BY THE REALTORS® ASSOCIATION OF EDMONTON. ALL RIGHTS RESERVED.Trademarks are owned or controlled by the Canadian Real Estate Association (CREA) and identify real estate professionals who are members of CREA (REALTOR®, REALTORS®) and/or the quality of services they provide (MLS®, Multiple Listing Service®)

Listing information last updated on May 1st, 2025 at 2:17pm MDT